

**PRODUCT INFORMATION**

<b>Target</b>	LAG3
<b>Synonyms</b>	LAG-3;CD223
<b>Description</b>	Recombinant Human LAG3 Protein with C-terminal 6×His tag
<b>Delivery</b>	In Stock
<b>Uniprot ID</b>	P18627
<b>Expression Host</b>	HEK293
<b>Tag</b>	C-6×His Tag
<b>Molecular Characterization</b>	LAG3(Leu23-Leu450) 6×His tag
<b>Molecular Weight</b>	The protein has a predicted molecular mass of 47.0 kDa after removal of the signal peptide. The apparent molecular mass of LAG3-His is approximately 55-70 kDa due to glycosylation.
<b>Purity</b>	The purity of the protein is greater than 95% as determined by SDS-PAGE and Coomassie blue staining.
<b>Formulation &amp; Reconstitution</b>	Lyophilized from sterile PBS, pH 7.4. Normally 5 % - 8% trehalose is added as protectants before lyophilization. Please see Certificate of Analysis for specific instructions of reconstitution.
<b>Storage&amp;Shipping</b>	Store at -20°C to -80°C for 12 months in lyophilized form. After reconstitution, if not intended for use within a month, aliquot and store at -80°C (Avoid repeated freezing and thawing). Lyophilized proteins are shipped at ambient temperature.
<b>Background</b>	Lymphocyte-activation protein 3 belongs to Ig superfamily and contains 4 extracellular Ig-like domains. The LAG3 gene contains 8 exons. The sequence data, exon/intron organization, and chromosomal localization all indicate a close relationship of LAG3 to CD4. [provided by RefSeq, Jul 2008]
<b>Usage</b>	Research use only
<b>Conjugate</b>	Unconjugated



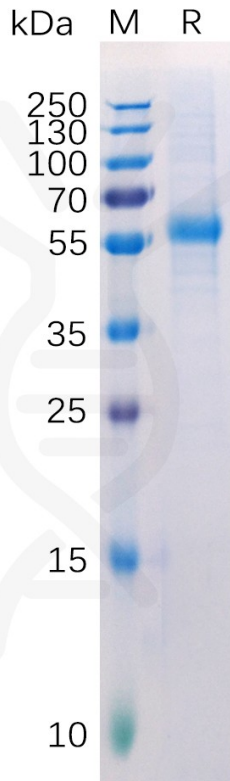


Figure 1. Human LAG3 Protein, His Tag on SDS-PAGE under reducing condition.

### Human LAG3, His Tagged protein ELISA

0.1  $\mu$ g of Human LAG3, His Tagged protein per well

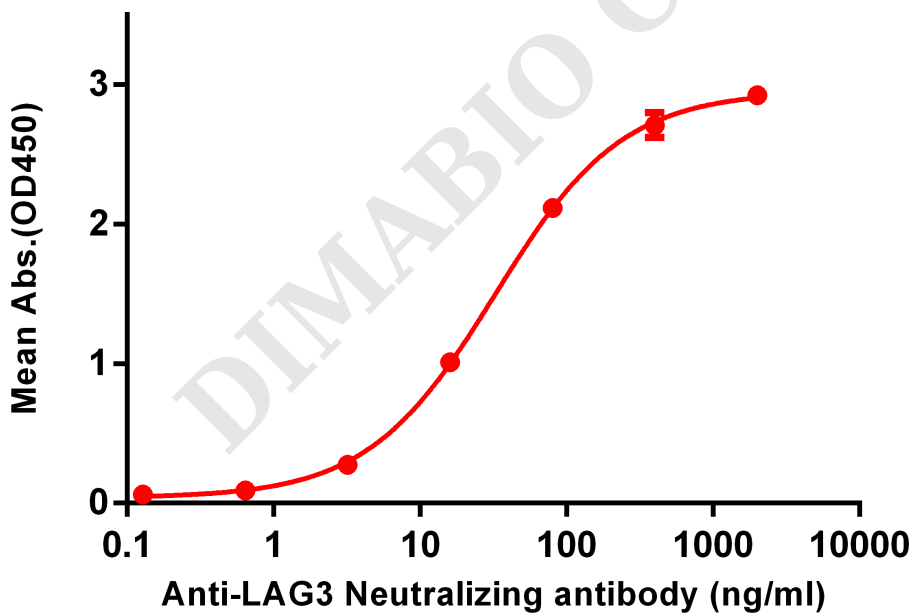


Figure 2. ELISA plate pre-coated by 1  $\mu$ g/ml (100  $\mu$ l/well) Human LAG3 , His tagged protein (PME100512) can bind Anti-LAG3 Neutralizing antibody BME100062 in a linear range of 16-80ng/ml.

