

PRODUCT INFORMATION

Target	LIF
Synonyms	Leukemia inhibitory factor;D factor; MLPLI;Emfilermin
Description	Recombinant human LIF protein with C-terminal human Fc tag
Delivery	In Stock
Uniprot ID	P15018
Expression Host	HEK293
Tag	C-Human Fc Tag
Molecular Characterization	LIF(Ser23-Phe202) hFc(Glu99-Ala330)
Molecular Weight	The protein has a predicted molecular mass of 46 kDa after removal of the signal peptide. The apparent molecular mass of LIF-hFc is approximately 55-70 kDa due to glycosylation.
Purity	The purity of the protein is greater than 95% as determined by SDS-PAGE and Coomassie blue staining.
Formulation & Reconstitution	Lyophilized from sterile PBS, pH 7.4. Normally 5 % - 8% trehalose is added as protectants before lyophilization. Please see Certificate of Analysis for specific instructions of reconstitution.
Storage & Shipping	Store at -20°C to -80°C for 12 months in lyophilized form. After reconstitution, if not intended for use within a month, aliquot and store at -80°C (Avoid repeated freezing and thawing). Lyophilized proteins are shipped at ambient temperature.
Background	The protein encoded by this gene is a pleiotropic cytokine with roles in several different systems. It is involved in the induction of hematopoietic differentiation in normal and myeloid leukemia cells, induction of neuronal cell differentiation, regulator of mesenchymal to epithelial conversion during kidney development, and may also have a role in immune tolerance at the maternal-fetal interface. Alternatively spliced transcript variants encoding multiple isoforms have been observed for this gene. [provided by RefSeq, Mar 2012]
Usage	Research use only
Conjugate	Unconjugated



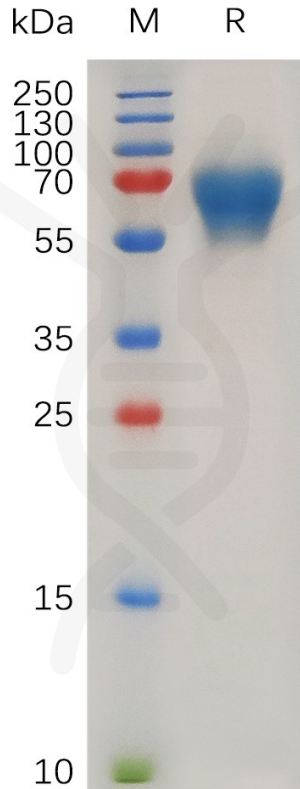


Figure 1. Human LIF Protein, hFc Tag on SDS-PAGE under reducing condition.

Human LIF, hFc Tagged protein ELISA

0.2 µg of Human LIF, hFc tagged protein per well

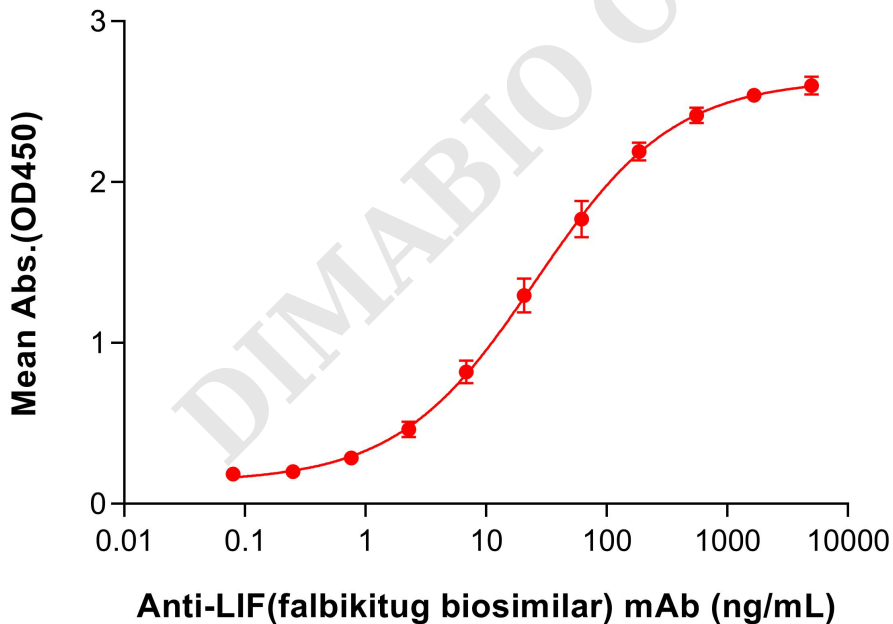


Figure 2. ELISA plate pre-coated by 2 µg/mL (100 µL/well) Human LIF Protein, hFc Tag (PME100744) can bind Anti-LIF(falbikitug biosimilar) mAb (BME100506) in a linear range of 2.29-61.73 ng/mL, mouse anti-human Fab-specific antibody was used as detection antibody.

