

PRODUCT INFORMATION

Target	LongIGF-II
Synonyms	Insulin-Like Growth Factor II;IGF-II;Somatomedin-A;IGF2;PP1446
Description	Recombinant Human Long Insulin-Like Growth Factor II is produced by our E.coli expression system and the target gene encoding Ala25-Glu91 is expressed.
Delivery	In Stock
Uniprot ID	P01344
Expression Host	E.coli
Tag	
Molecular Characterization	Not available
Molecular Weight	8.91 KDa
Purity	Greater than 95% as determined by reducing SDS-PAGE.
Formulation & Reconstitution	Lyophilized from a 0.2 µm filtered solution of 5mM HAC, pH 3.0.
Storage&Shipping	Store at -20°C to -80°C for 12 months in lyophilized form. After reconstitution, if not intended for use within a month, aliquot and store at -80°C (Avoid repeated freezing and thawing). Lyophilized proteins are shipped at ambient temperature.
Sterility	Products are supplied non-sterile. For cell culture applications, dilute in appropriate medium and sterile-filter (0.22 µm) prior to use.
Background	Insulin-Like Growth Factor II (IGF2) belongs to the insulin family of polypeptide growth factors that is involved in development and growth. Members of this family are structurally homologous to proinsulin, and share higher sequence identity. IGF2 is expressed only from the paternally inherited allele and believed to be secreted by the liver and to circulate in the blood. IGF2 possess growth-promoting activity and can stimulate the proliferation and survival of various cell types including muscle, bone, and cartilage tissue in vitro. IGF2 is influenced by placental lactogen and may play a role in fetal development.
Usage	Research use only
Conjugate	Unconjugated



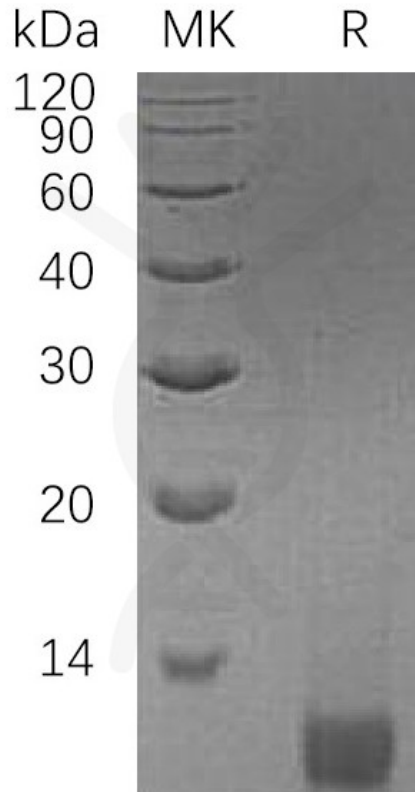


Figure 1. Greater than 95% as determined by reducing SDS-PAGE.

DIMABIO CONFIDENTIAL

