

PRODUCT INFORMATION

Target	LRP6
Synonyms	ADCAD2; STHAG7
Description	Recombinant human LRP6(20-1370) Protein with C-terminal 3×Flag tag
Delivery	In Stock
Uniprot ID	O75581
Expression Host	HEK293
Tag	C-3×Flag Tag
Molecular Characterization	LRP6(Ala20-Ala1370) 3×Flag tag
Molecular Weight	The protein has a predicted molecular mass of 155 kDa after removal of the signal peptide. The apparent molecular mass of LRP6(20-1370)-Flag is approximately 130-250 kDa due to glycosylation.
Purity	The purity of the protein is greater than 85% as determined by SDS-PAGE and Coomassie blue staining.
Formulation & Reconstitution	Lyophilized from sterile PBS, pH 7.4. Normally 5 % - 8% trehalose is added as protectants before lyophilization. Please see Certificate of Analysis for specific instructions of reconstitution.
Storage&Shipping	Store at -20°C to -80°C for 12 months in lyophilized form. After reconstitution, if not intended for use within a month, aliquot and store at -80°C (Avoid repeated freezing and thawing). Lyophilized proteins are shipped at ambient temperature.
Sterility	Products are supplied non-sterile. For cell culture applications, dilute in appropriate medium and sterile-filter (0.22 µm) prior to use.
Background	This gene encodes a member of the low density lipoprotein (LDL) receptor gene family. LDL receptors are transmembrane cell surface proteins involved in receptor-mediated endocytosis of lipoprotein and protein ligands. The protein encoded by this gene functions as a receptor or, with Frizzled, a co-receptor for Wnt and thereby transmits the canonical Wnt/beta-catenin signaling cascade. Through its interaction with the Wnt/beta-catenin signaling cascade this gene plays a role in the regulation of cell differentiation, proliferation, and migration and the development of many cancer types. This protein undergoes gamma-secretase dependent RIP- (regulated intramembrane proteolysis) processing but the precise locations of the cleavage sites have not been determined.[provided by RefSeq, Dec 2009]
Usage	Research use only
Conjugate	Unconjugated



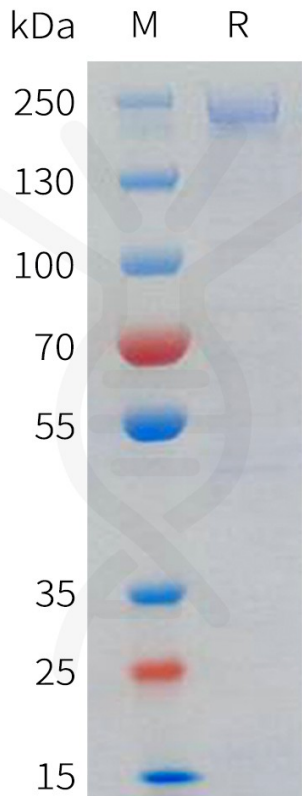


Figure 1. Human LRP6(20-1370) Protein, Flag Tag on SDS-PAGE under reducing condition.

Human LRP6(20-1370), Flag Tagged protein ELISA

0.2 μg of Human LRP6(20-1370), Flag tagged protein per well

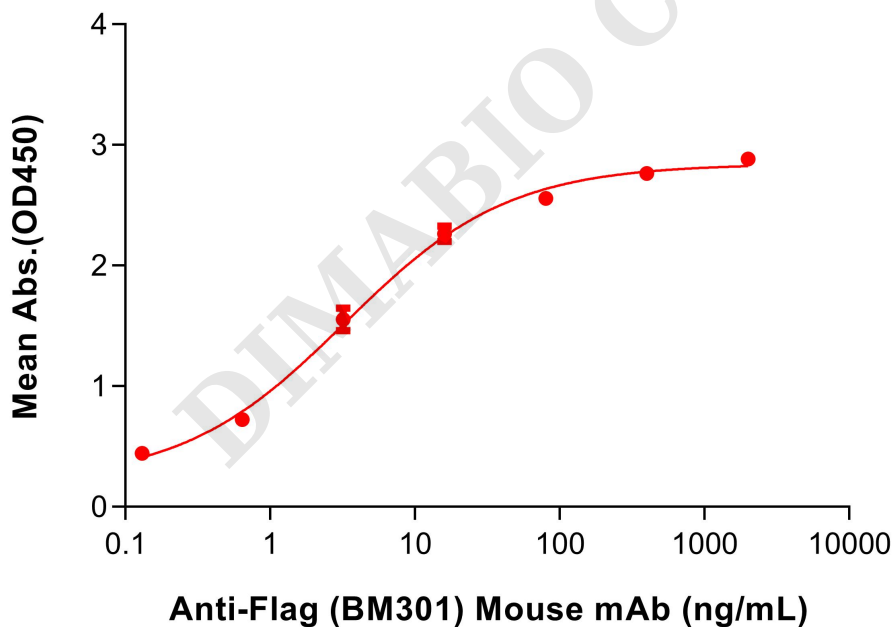


Figure 3. ELISA plate pre-coated by 2 $\mu\text{g}/\text{mL}$ (100 $\mu\text{L}/\text{well}$) Human LRP6(20-1370) Protein, Flag Tag (PME101719) can bind Anti-Flag (BM301) Mouse mAb (BME100093) in a linear range of 0.64-16 ng/mL.

