

## PRODUCT INFORMATION

<b>Target</b>	LRRC15
<b>Synonyms</b>	LIB
<b>Description</b>	Recombinant human LRRC15(22-538) Protein with C-terminal human Fc tag
<b>Delivery</b>	In Stock
<b>Uniprot ID</b>	Q8TF66
<b>Expression Host</b>	HEK293
<b>Tag</b>	C-Human Fc tag
<b>Molecular Characterization</b>	LRRC15(Tyr22-Gly538) hFc(Glu99-Ala330)
<b>Molecular Weight</b>	The protein has a predicted molecular mass of 83.9 kDa after removal of the signal peptide.
<b>Purity</b>	The purity of the protein is greater than 95% as determined by SDS-PAGE and Coomassie blue staining.
<b>Formulation &amp; Reconstitution</b>	Lyophilized from sterile PBS, pH 7.4. Normally 5 % - 8% trehalose is added as protectants before lyophilization. Please see Certificate of Analysis for specific instructions of reconstitution.
<b>Storage&amp;Shipping</b>	Store at -20°C to -80°C for 12 months in lyophilized form. After reconstitution, if not intended for use within a month, aliquot and store at -80°C (Avoid repeated freezing and thawing). Lyophilized proteins are shipped at ambient temperature.
<b>Background</b>	Enables several functions, including fibronectin binding activity; laminin binding activity; and protein sequestering activity. Involved in several processes, including host-mediated suppression of symbiont invasion; negative regulation of protein localization to plasma membrane; and receptor-mediated virion attachment to host cell. Located in collagen-containing extracellular matrix and plasma membrane. Is active in apical plasma membrane. [provided by Alliance of Genome Resources, Apr 2025]
<b>Usage</b>	Research use only
<b>Conjugate</b>	Unconjugated



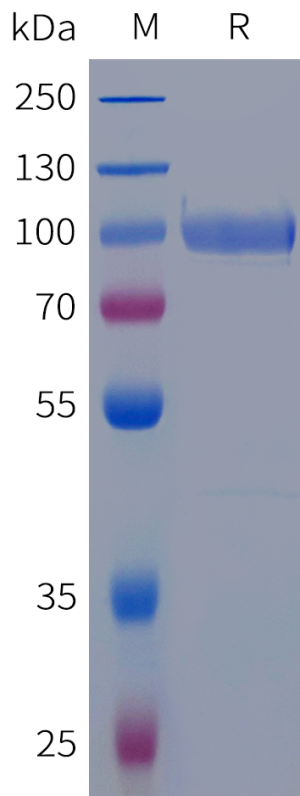


Figure 1. Human LRRC15(22-538) Protein, hFc Tag on SDS-PAGE under reducing condition.

DIMABIO CONFIDENTIAL

