

PRODUCT INFORMATION

Target	MCHR1
Synonyms	SLC1, GPR24, MCH1R, SLC-1, MCH-1R
Description	Recombinant human MCHR1 Protein with C-terminal human Fc tag
Delivery	In Stock
Uniprot ID	Q99705
Expression Host	HEK293
Tag	C-Human Fc tag
Molecular Characterization	MCHR1(Met1-Ile41) hFc(Glu99-Ala330)
Molecular Weight	The protein has a predicted molecular mass of 30.3 kDa after removal of the signal peptide.
Purity	The purity of the protein is greater than 95% as determined by SDS-PAGE and Coomassie blue staining.
Formulation & Reconstitution	Lyophilized from sterile PBS, pH 7.4. Normally 5% - 8% trehalose is added as protectants before lyophilization. Please see Certificate of Analysis for specific instructions of reconstitution.
Storage&Shipping	Store at -20°C to -80°C for 12 months in lyophilized form. After reconstitution, if not intended for use within a month, aliquot and store at -80°C (Avoid repeated freezing and thawing). Lyophilized proteins are shipped at ambient temperature.
Sterility	Products are supplied non-sterile. For cell culture applications, dilute in appropriate medium and sterile-filter (0.22 µm) prior to use.
Background	The protein encoded by this gene, a member of the G protein-coupled receptor family 1, is an integral plasma membrane protein which binds melanin-concentrating hormone. The encoded protein can inhibit cAMP accumulation and stimulate intracellular calcium flux, and is probably involved in the neuronal regulation of food consumption. Although structurally similar to somatostatin receptors, this protein does not seem to bind somatostatin. [provided by RefSeq, Jul 2008]
Usage	Research use only
Conjugate	Unconjugated



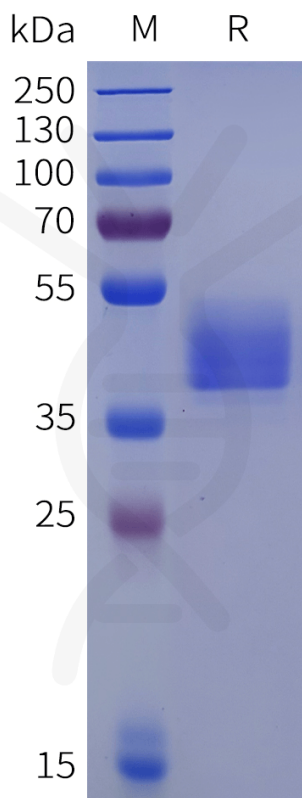


Figure 1. Human MCHR1 Protein, hFc Tag on SDS-PAGE under reducing condition.

