

PRODUCT INFORMATION

Target	MELTF
Synonyms	CD228;MAP97;MF12;MTf;MTF1
Description	Recombinant Human MELTF Protein with C-terminal 6XHis tag
Delivery	In Stock
Uniprot ID	P08582
Expression Host	HEK293
Tag	C-6×His Tag
Molecular Characterization	MELTF(Gly20-Gln708) 6×His tag
Molecular Weight	The protein has a predicted molecular mass of 76.2 kDa after removal of the signal peptide. The apparent molecular mass of MELTF-His is approximately 70-100 kDa due to glycosylation.
Purity	The purity of the protein is greater than 85% as determined by SDS-PAGE and Coomassie blue staining.
Formulation & Reconstitution	Lyophilized from sterile PBS, pH 7.4. Normally 5 % - 8% trehalose is added as protectants before lyophilization. Please see Certificate of Analysis for specific instructions of reconstitution.
Storage&Shipping	Store at -20°C to -80°C for 12 months in lyophilized form. After reconstitution, if not intended for use within a month, aliquot and store at -80°C (Avoid repeated freezing and thawing). Lyophilized proteins are shipped at ambient temperature.
Background	The protein encoded by this gene is a cell-surface glycoprotein found on melanoma cells. The protein shares sequence similarity and iron-binding properties with members of the transferrin superfamily. The importance of the iron binding function has not yet been identified. This gene resides in the same region of chromosome 3 as members of the transferrin superfamily. Alternative splicing results in two transcript variants. [provided by RefSeq, Jul 2008]
Usage	Research use only
Conjugate	Unconjugated



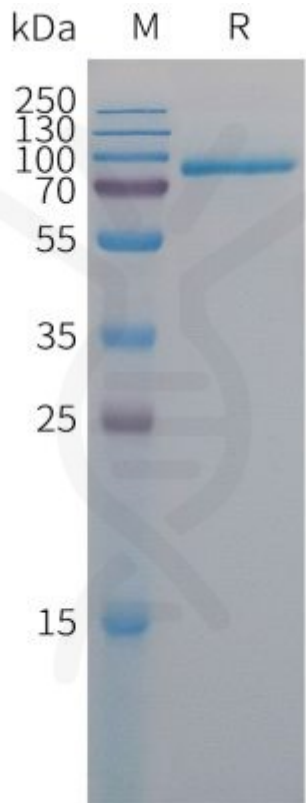


Figure 1.Human MELTF Protein, His Tag on SDS-PAGE under reducing condition.

