

**PRODUCT INFORMATION**

<b>Target</b>	OX40 Ligand
<b>Synonyms</b>	OX40L;TNFSF4;CD252;Glycoprotein Gp34;TXGP1;CD134 ligand;CD134L
<b>Description</b>	Recombinant human OX40L protein with N-terminal mouse Fc and C-terminal 6×His tag
<b>Delivery</b>	In Stock
<b>Uniprot ID</b>	P23510
<b>Expression Host</b>	HEK293
<b>Tag</b>	N-Mouse Fc and C-6×His Tag
<b>Molecular Characterization</b>	mFc(Pro99-Lys330) OX40 Ligand(Gln51-Leu183) 6×His
<b>Molecular Weight</b>	The protein has a predicted molecular mass of 44.0 kDa after removal of the signal peptide.
<b>Purity</b>	The purity of the protein is greater than 95% as determined by SDS-PAGE and Coomassie blue staining.
<b>Formulation &amp; Reconstitution</b>	Lyophilized from sterile PBS, pH 7.4. Normally 5 % - 8% trehalose is added as protectants before lyophilization. Please see Certificate of Analysis for specific instructions of reconstitution.
<b>Storage&amp;Shipping</b>	Store at -20°C to -80°C for 12 months in lyophilized form. After reconstitution, if not intended for use within a month, aliquot and store at -80°C (Avoid repeated freezing and thawing). Lyophilized proteins are shipped at ambient temperature.
<b>Background</b>	This gene encodes a cytokine of the tumor necrosis factor (TNF) ligand family. The encoded protein functions in T cell antigen-presenting cell (APC) interactions and mediates adhesion of activated T cells to endothelial cells. Polymorphisms in this gene have been associated with Sjogren's syndrome and systemic lupus erythematosus. Alternative splicing results in multiple transcript variants.
<b>Usage</b>	Research use only
<b>Conjugate</b>	Unconjugated



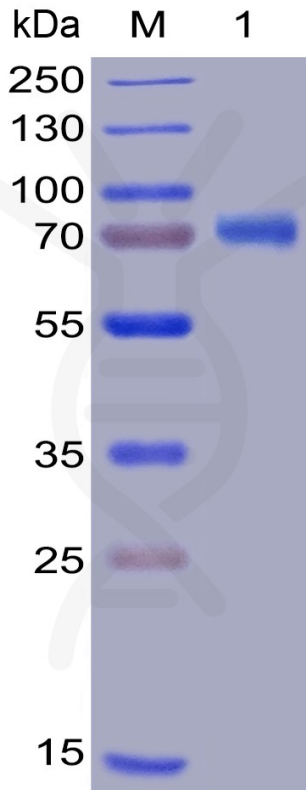


Figure 1. Human OX40 Ligand Protein, mFc-His Tag on SDS-PAGE under reducing condition.

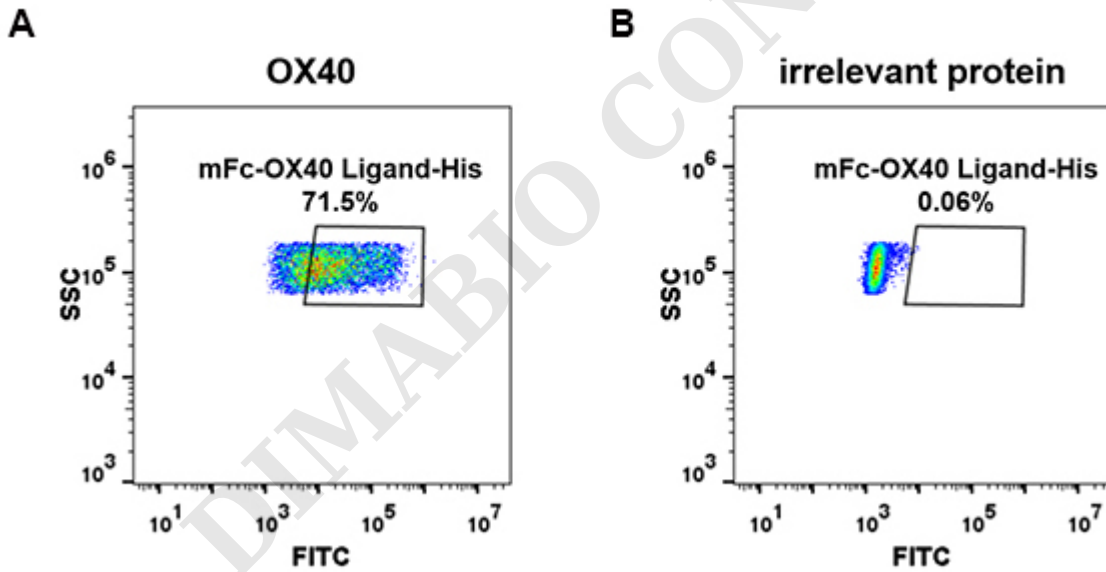


Figure 2. HEK293 cell line transfected with irrelevant protein (B) and human OX40 (A) were surface stained with Human OX40 Ligand, mFc-His tagged protein (PME100021) 10 µg/ml followed by Alexa 488-conjugated anti-mouse IgG secondary antibody.



### Human OX40-L, mFc-His tagged protein ELISA

0.1  $\mu\text{g}$  of Human OX40-L, mFc-His tagged protein per well

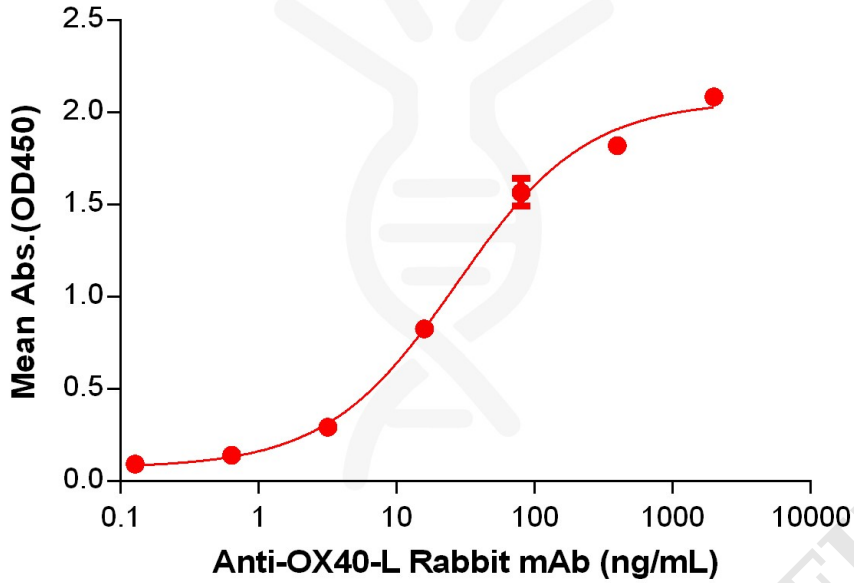


Figure 3. ELISA plate pre-coated by 1  $\mu\text{g}/\text{mL}$  (100  $\mu\text{L}/\text{well}$ ) Human OX40-L Protein, mFc-His Tag (PME100021) can bind Anti-OX40-L Rabbit mAb in a linear range of 3.2-80 ng/mL.

