

PRODUCT INFORMATION

Target	PDL2
Synonyms	B7DC;bA574F11.2;Btdc;CD273;PD-L2;PDCD1L2;PDL2
Description	Recombinant human PDL2 protein with C-terminal 6×His tag
Delivery	In Stock
Uniprot ID	Q9BQ51
Expression Host	HEK293
Tag	C-6×His Tag
Molecular Characterization	PDL2(Leu20-Pro219) 6×His tag
Molecular Weight	The protein has a predicted molecular mass of 23.4 kDa after removal of the signal peptide.The apparent molecular mass of PDL2-His is approximately 35-55 kDa due to glycosylation.
Purity	The purity of the protein is greater than 95% as determined by SDS-PAGE and Coomassie blue staining.
Formulation & Reconstitution	Lyophilized from sterile PBS, pH 7.4. Normally 5 % - 8% trehalose is added as protectants before lyophilization. Please see Certificate of Analysis for specific instructions of reconstitution.
Storage & Shipping	Store at -20°C to -80°C for 12 months in lyophilized form. After reconstitution, if not intended for use within a month, aliquot and store at -80°C (Avoid repeated freezing and thawing). Lyophilized proteins are shipped at ambient temperature.
Background	Involved in the costimulatory signal, essential for T-cell proliferation and IFNG production in a PDCD1-independent manner. Interaction with PDCD1 inhibits T-cell proliferation by blocking cell cycle progression and cytokine production (By similarity).[UniProtKB/Swiss-Prot Function]
Usage	Research use only
Conjugate	Unconjugated



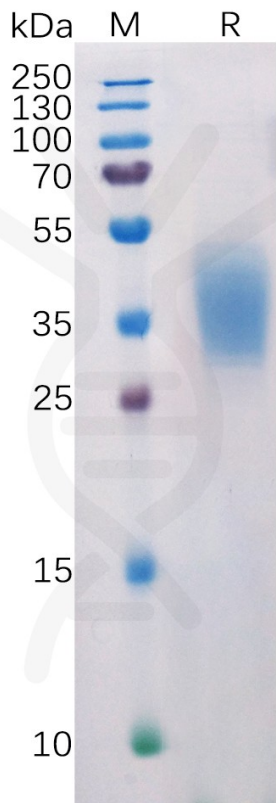


Figure 1. Human PDL2 Protein, His Tag on SDS-PAGE under reducing condition.

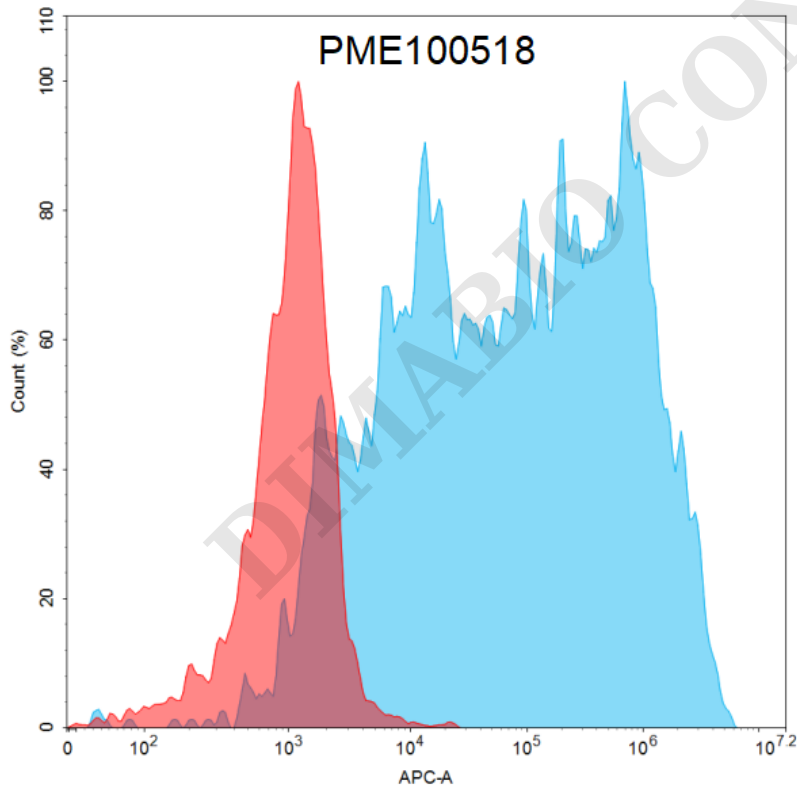


Figure 2. Flow cytometry analysis with 15 μ g/mL Human PDL2 Protein, His tag (PME100518) on HEK293 cells transfected with human PD1 (Blue histogram) or HEK293 transfected with irrelevant protein (Red histogram).



Human PDL2, His Tagged protein ELISA
0.2 µg of Human PDL2, His tagged protein per well

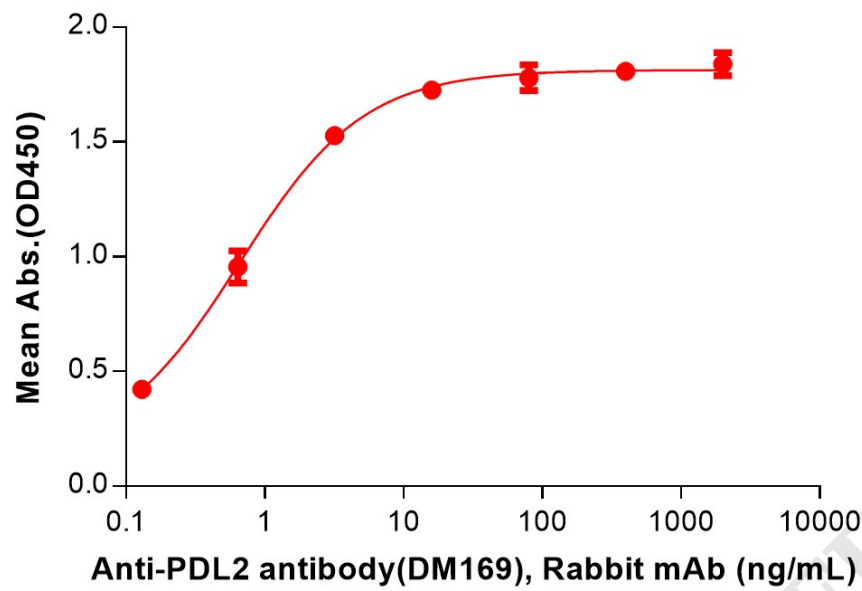


Figure 3. ELISA plate pre-coated by 2 µg/mL (100 µL/well) Human PDL2 Protein, His Tag (PME100518) can bind Anti-PDL2 antibody(DM169), Rabbit mAb in a linear range of 0.13–3.20 ng/mL.

