

**PRODUCT INFORMATION**

<b>Target</b>	PEDF
<b>Synonyms</b>	OI6; OI12; SERPINF1; EPC-1; PIG35
<b>Description</b>	Recombinant human PEDF Protein with C-terminal 6×His tag
<b>Delivery</b>	In Stock
<b>Uniprot ID</b>	P36955
<b>Expression Host</b>	HEK293
<b>Tag</b>	C-6×His tag
<b>Molecular Characterization</b>	PEDF(Gln20-Pro418) 6×His tag
<b>Molecular Weight</b>	The protein has a predicted molecular mass of 45.2 kDa after removal of the signal peptide. The apparent molecular mass of PEDF-His is approximately 35-55 kDa due to glycosylation.
<b>Purity</b>	The purity of the protein is greater than 85% as determined by SDS-PAGE and Coomassie blue staining.
<b>Formulation &amp; Reconstitution</b>	Lyophilized from sterile PBS, pH 7.4. Normally 5 % - 8% trehalose is added as protectants before lyophilization. Please see Certificate of Analysis for specific instructions of reconstitution.
<b>Storage&amp;Shipping</b>	Store at -20°C to -80°C for 12 months in lyophilized form. After reconstitution, if not intended for use within a month, aliquot and store at -80°C (Avoid repeated freezing and thawing). Lyophilized proteins are shipped at ambient temperature.
<b>Sterility</b>	Products are supplied non-sterile. For cell culture applications, dilute in appropriate medium and sterile-filter (0.22 µm) prior to use.
<b>Background</b>	This gene encodes a member of the serpin family that does not display the serine protease inhibitory activity shown by many of the other serpin proteins. The encoded protein is secreted and strongly inhibits angiogenesis. In addition, this protein is a neurotrophic factor involved in neuronal differentiation in retinoblastoma cells. Mutations in this gene were found in individuals with osteogenesis imperfecta, type VI. [provided by RefSeq, Aug 2016]
<b>Usage</b>	Research use only
<b>Conjugate</b>	Unconjugated



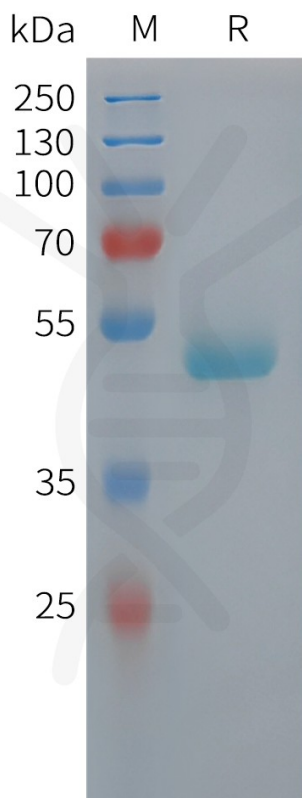


Figure 1. Human PEDF Protein, His Tag on SDS-PAGE under reducing condition.

