

PRODUCT INFORMATION

Target	PLXDC2
Synonyms	TEM7R
Description	Recombinant Human PLXDC2 Protein with C-terminal 6×His tag
Delivery	In Stock
Uniprot ID	Q6UX71
Expression Host	HEK293
Tag	C-6×His Tag
Molecular Characterization	PLXDC2(Lys31-His453) 6×His tag
Molecular Weight	The protein has a predicted molecular mass of 48.7 kDa after removal of the signal peptide. The apparent molecular mass of PLXDC2-His is approximately 55-100 kDa due to glycosylation.
Purity	The purity of the protein is greater than 85% as determined by SDS-PAGE and Coomassie blue staining.
Formulation & Reconstitution	Lyophilized from sterile PBS, pH 7.4. Normally 5 % - 8% trehalose is added as protectants before lyophilization. Please see Certificate of Analysis for specific instructions of reconstitution.
Storage&Shipping	Store at -20°C to -80°C for 12 months in lyophilized form. After reconstitution, if not intended for use within a month, aliquot and store at -80°C (Avoid repeated freezing and thawing). Lyophilized proteins are shipped at ambient temperature.
Background	May play a role in tumor angiogenesis.[UniProtKB/Swiss-Prot Function]
Usage	Research use only
Conjugate	Unconjugated



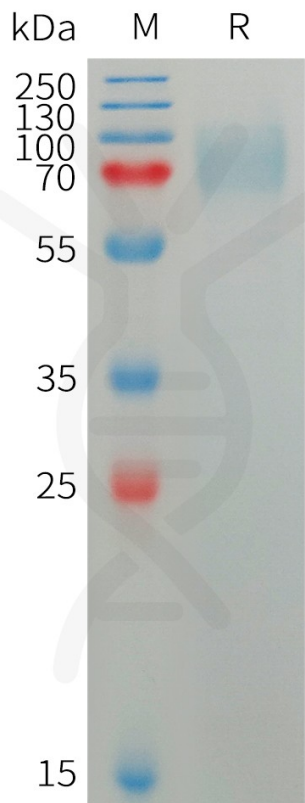


Figure 1. Human PLXDC2 Protein, His Tag on SDS-PAGE under reducing condition.

