

## PRODUCT INFORMATION

<b>Target</b>	RhoC
<b>Synonyms</b>	ARH9;ARHC;H9;RHOH9
<b>Description</b>	Recombinant Human RHOC Protein with C-terminal human Fc tag
<b>Delivery</b>	In Stock
<b>Uniprot ID</b>	P08134
<b>Expression Host</b>	HEK293
<b>Tag</b>	C-Human Fc Tag
<b>Molecular Characterization</b>	RHOC(Met1-Cys190) hFc(Glu99-Ala330)
<b>Molecular Weight</b>	The protein has a predicted molecular mass of 47.8 kDa after removal of the signal peptide. The apparent molecular mass of RHOC-hFc is approximately 35-55 kDa due to glycosylation.
<b>Purity</b>	The purity of the protein is greater than 95% as determined by SDS-PAGE and Coomassie blue staining.
<b>Formulation &amp; Reconstitution</b>	Lyophilized from sterile PBS, pH 7.4. Normally 5% - 8% trehalose is added as protectants before lyophilization. Please see Certificate of Analysis for specific instructions of reconstitution.
<b>Storage&amp;Shipping</b>	Store at -20°C to -80°C for 12 months in lyophilized form. After reconstitution, if not intended for use within a month, aliquot and store at -80°C (Avoid repeated freezing and thawing). Lyophilized proteins are shipped at ambient temperature.
<b>Background</b>	This gene encodes a member of the Rho family of small GTPases, which cycle between inactive GDP-bound and active GTP-bound states and function as molecular switches in signal transduction cascades. Rho proteins promote reorganization of the actin cytoskeleton and regulate cell shape, attachment, and motility. The protein encoded by this gene is prenylated at its C-terminus, and localizes to the cytoplasm and plasma membrane. It is thought to be important in cell locomotion. Overexpression of this gene is associated with tumor cell proliferation and metastasis. Multiple alternatively spliced variants, encoding the same protein, have been identified. [provided by RefSeq, Jul 2008]
<b>Usage</b>	Research use only
<b>Conjugate</b>	Unconjugated



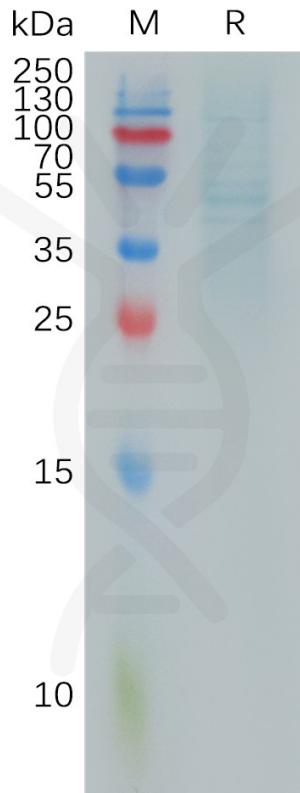


Figure 1. Human RHOC Protein, hFc Tag on SDS-PAGE under reducing condition.

DIMABIO CONFIDENTIAL

