

PRODUCT INFORMATION

Target	SERPINF2
Synonyms	A2AP;AAP;ALPHA-2-PI;alpha2AP;API;PLI
Description	Recombinant Human SERPINF2 Protein with C-terminal 6×His tag
Delivery	In Stock
Uniprot ID	P08697
Expression Host	HEK293
Tag	C-6×His Tag
Molecular Characterization	SERPINF2(Met28-Lys491) 6×His tag
Molecular Weight	The protein has a predicted molecular mass of 52.5 kDa after removal of the signal peptide. The apparent molecular mass of SERPINF2-His is approximately 55-70 kDa due to glycosylation.
Purity	The purity of the protein is greater than 85% as determined by SDS-PAGE and Coomassie blue staining.
Formulation & Reconstitution	Lyophilized from sterile PBS, pH 7.4. Normally 5 % - 8% trehalose is added as protectants before lyophilization. Please see Certificate of Analysis for specific instructions of reconstitution.
Storage&Shipping	Store at -20°C to -80°C for 12 months in lyophilized form. After reconstitution, if not intended for use within a month, aliquot and store at -80°C (Avoid repeated freezing and thawing). Lyophilized proteins are shipped at ambient temperature.
Background	This gene encodes a member of the serpin family of serine protease inhibitors. The protein is a major inhibitor of plasmin, which degrades fibrin and various other proteins. Consequently, the proper function of this gene has a major role in regulating the blood clotting pathway. Mutations in this gene result in alpha-2-plasmin inhibitor deficiency, which is characterized by severe hemorrhagic diathesis. Multiple transcript variants encoding different isoforms have been found for this gene. [provided by RefSeq, Sep 2009]
Usage	Research use only
Conjugate	Unconjugated



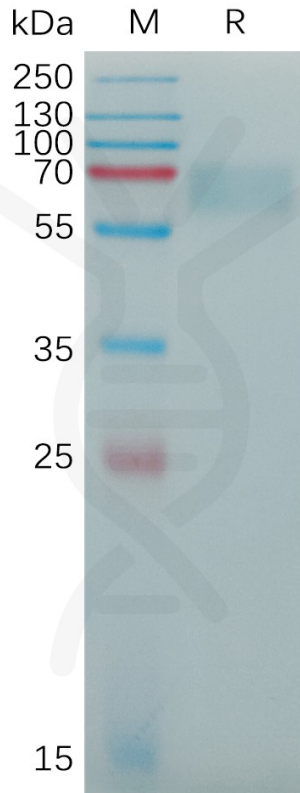


Figure 1. Human SERPINF2 Protein, His Tag on SDS-PAGE under reducing condition.

DIMABIO CONFIDENTIAL

