

PRODUCT INFORMATION

Target	SIGLEC10
Synonyms	SIGLEC10;Siglec-10;SLG2;PRO940;MGC126774
Description	Recombinant Human SIGLEC10 protein with C-terminal 6×His tag
Delivery	In Stock
Uniprot ID	Q96LC7
Expression Host	HEK293
Tag	C-6×His Tag
Molecular Characterization	SIGLEC10(Met17-Thr546) 6×His tag
Molecular Weight	The protein has a predicted molecular mass of 59.0 kDa after removal of the signal peptide. The apparent molecular mass of SIGLEC10-His is approximately 70-100 kDa due to glycosylation.
Purity	The purity of the protein is greater than 95% as determined by SDS-PAGE and Coomassie blue staining.
Formulation & Reconstitution	Lyophilized from sterile PBS, pH 7.4. Normally 5 % - 8% trehalose is added as protectants before lyophilization. Please see Certificate of Analysis for specific instructions of reconstitution.
Storage&Shipping	Store at -20°C to -80°C for 12 months in lyophilized form. After reconstitution, if not intended for use within a month, aliquot and store at -80°C (Avoid repeated freezing and thawing). Lyophilized proteins are shipped at ambient temperature.
Background	SIGLECs are members of the immunoglobulin superfamily that are expressed on the cell surface. Most SIGLECs have 1 or more cytoplasmic immune receptor tyrosine-based inhibitory motifs, or ITIMs. SIGLECs are typically expressed on cells of the innate immune system, with the exception of the B-cell expressed SIGLEC6 (MIM 604405).
Usage	Research use only
Conjugate	Unconjugated



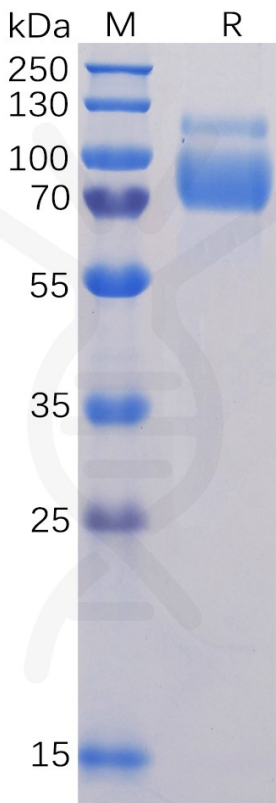
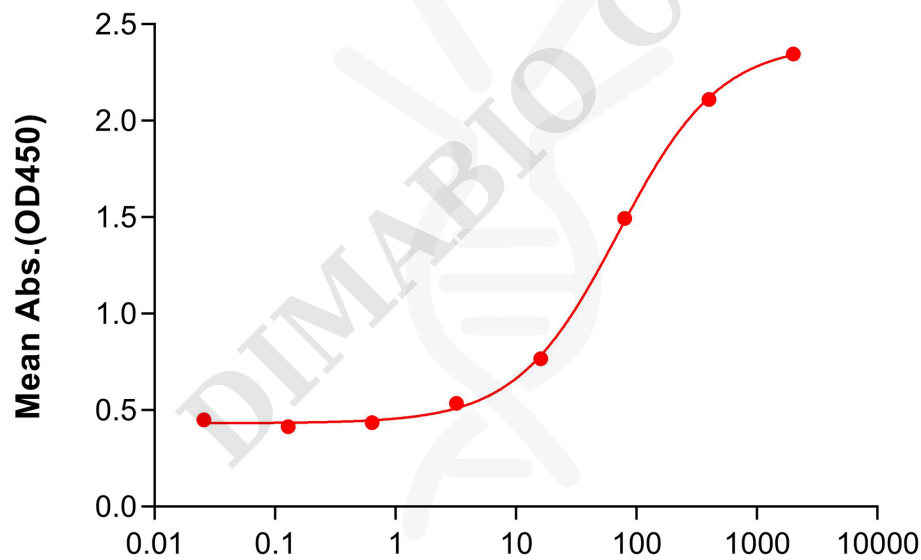


Figure 1. Human SIGLEC10 Protein, His Tag on SDS-PAGE under reducing condition.

Human SIGLEC10, His tagged protein ELISA

1μg of Human SIGLEC10, His tagged protein per well



Anti-SIGLEC10 antibody(3E11), IgG1 Chimeric mAb (ng/mL)

Figure 2. ELISA plate pre-coated by 1 μg/mL (100 μL/well) Human SIGLEC10 Protein, His Tag (PME100092) can bind Anti-SIGLEC10 antibody(3E11), IgG1 Chimeric mAb (DMC101686) in a linear range of 16-80 ng/mL.

