

PRODUCT INFORMATION

Target	SIGLEC6
Synonyms	CD327, CD33L, OBBP1, CD33L1, CD33L2, CDW327
Description	Recombinant human SIGLEC6 Protein with C-terminal 6×His tag
Delivery	In Stock
Uniprot ID	O43699
Expression Host	HEK293
Tag	C-6×His tag
Molecular Characterization	SIGLEC6(Gln27-Val347) 6×His tag
Molecular Weight	The protein has a predicted molecular mass of 36.2 kDa after removal of the signal peptide.
Purity	The purity of the protein is greater than 85% as determined by SDS-PAGE and Coomassie blue staining.
Formulation & Reconstitution	Lyophilized from sterile PBS, pH 7.4. Normally 5 % - 8% trehalose is added as protectants before lyophilization. Please see Certificate of Analysis for specific instructions of reconstitution.
Storage&Shipping	Store at -20°C to -80°C for 12 months in lyophilized form. After reconstitution, if not intended for use within a month, aliquot and store at -80°C (Avoid repeated freezing and thawing). Lyophilized proteins are shipped at ambient temperature.
Sterility	Products are supplied non-sterile. For cell culture applications, dilute in appropriate medium and sterile-filter (0.22 µm) prior to use.
Background	This gene encodes a member of the SIGLEC (sialic acid binding immunoglobulin-like lectin) family of proteins. The encoded transmembrane receptor binds sialyl-TN glycans and leptin. Placental expression of the encoded protein is upregulated in preeclampsia. [provided by RefSeq, Jul 2016]
Usage	Research use only
Conjugate	Unconjugated



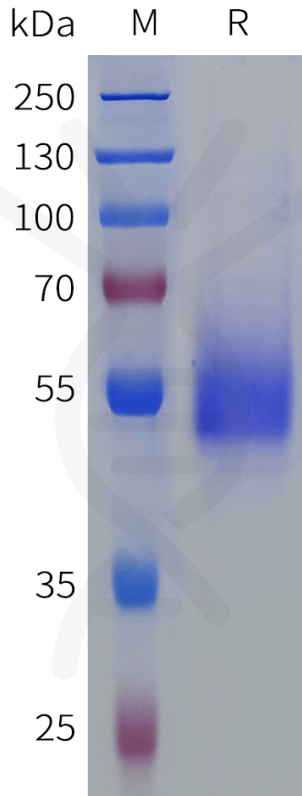


Figure 1. Human SIGLEC6 Protein, His Tag on SDS-PAGE under reducing condition.

