

PRODUCT INFORMATION

Target	SLAMF1
Synonyms	SLAMF1;CD150;CDw150;SLAM;IPO-3
Description	Recombinant human SLAMF1 protein with C-terminal mouse Fc and 6×His tag
Delivery	In Stock
Uniprot ID	Q13291
Expression Host	HEK293
Tag	C-Mouse Fc and 6×His Tag
Molecular Characterization	SLAMF1(Ala21-Pro237) mFc(Pro99-Lys330) 6×His tag
Molecular Weight	The protein has a predicted molecular mass of 51.8 kDa after removal of the signal peptide.
Purity	The purity of the protein is greater than 95% as determined by SDS-PAGE and Coomassie blue staining.
Formulation & Reconstitution	Lyophilized from sterile PBS, pH 7.4. Normally 5 % - 8% trehalose is added as protectants before lyophilization. Please see Certificate of Analysis for specific instructions of reconstitution.
Storage&Shipping	Store at -20°C to -80°C for 12 months in lyophilized form. After reconstitution, if not intended for use within a month, aliquot and store at -80°C (Avoid repeated freezing and thawing). Lyophilized proteins are shipped at ambient temperature.
Background	SLAMF1 (Signaling Lymphocytic Activation Molecule Family Member 1) is a Protein Coding gene. Diseases associated with SLAMF1 include Measles and Subacute Sclerosing Panencephalitis. Among its related pathways are Dendritic Cells Developmental Lineage Pathway and T Cell Co-Signaling Pathway: Ligand-Receptor Interactions. Gene Ontology (GO) annotations related to this gene include antigen binding. An important paralog of this gene is LY9.
Usage	Research use only
Conjugate	Unconjugated



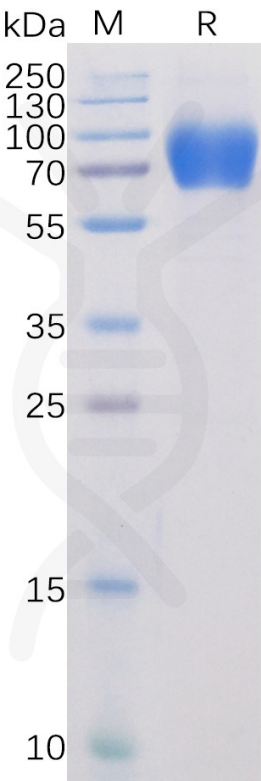


Figure 1. Human SLAMF1 Protein, mFc-His Tag on SDS-PAGE under reducing condition.

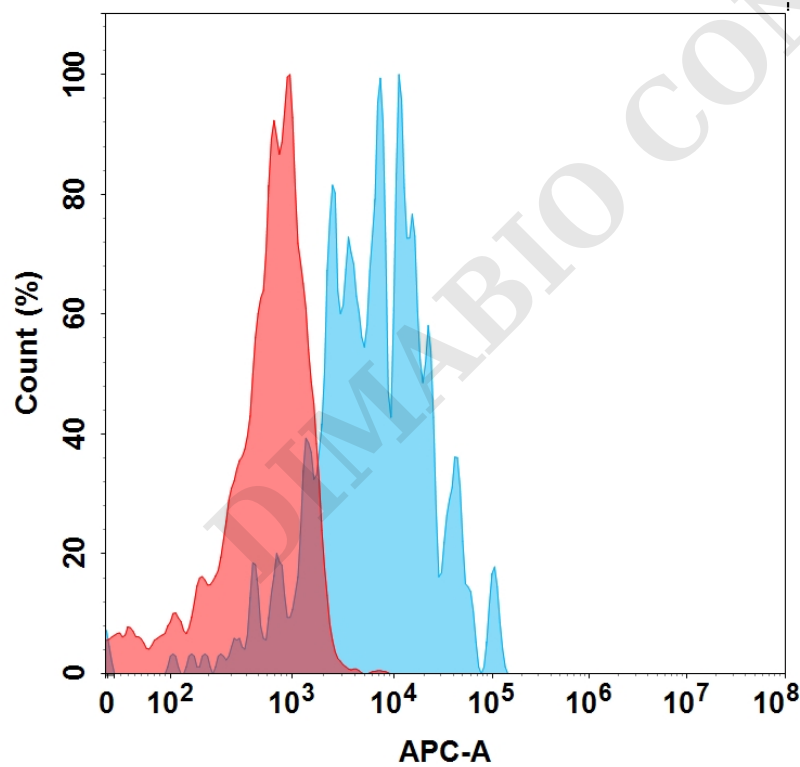


Figure 2. Flow cytometry analysis with 15 μ g/mL Human SLAMF1 Protein, mFc-His Tag (PME100024) on HEK293 cells transfected with Human SLAMF1 protein (Blue histogram) or HEK293 transfected with irrelevant protein (Red histogram).

