

PRODUCT INFORMATION

| | |
|---|--|
| Target | SLAMF8 |
| Synonyms | BLAME;CD353;SBBI42 |
| Description | Recombinant Human SLAMF8 Protein with C-terminal 6×His tag |
| Delivery | In Stock |
| Uniprot ID | Q9P0V8 |
| Expression Host | HEK293 |
| Tag | C-6×His Tag |
| Molecular Characterization | SLAMF8(Ala23-Asp233) 6×His tag |
| Molecular Weight | The protein has a predicted molecular mass of 24.2 kDa after removal of the signal peptide. The apparent molecular mass of SLAMF8-His is approximately 25-35 kDa due to glycosylation. |
| Purity | The purity of the protein is greater than 85% as determined by SDS-PAGE and Coomassie blue staining. |
| Formulation & Reconstitution | Lyophilized from sterile PBS, pH 7.4. Normally 5% - 8% trehalose is added as protectants before lyophilization. Please see Certificate of Analysis for specific instructions of reconstitution. |
| Storage&Shipping | Store at -20°C to -80°C for 12 months in lyophilized form. After reconstitution, if not intended for use within a month, aliquot and store at -80°C (Avoid repeated freezing and thawing). Lyophilized proteins are shipped at ambient temperature. |
| Sterility | Products are supplied non-sterile. For cell culture applications, dilute in appropriate medium and sterile-filter (0.22 µm) prior to use. |
| Background | This gene encodes a member of the CD2 family of cell surface proteins involved in lymphocyte activation. These proteins are characterized by Ig domains. This protein is expressed in lymphoid tissues, and studies of a similar protein in mouse suggest that it may function during B cell lineage commitment. The gene is found in a region of chromosome 1 containing many CD2 genes. [provided by RefSeq, Jul 2008] |
| Usage | Research use only |
| Conjugate | Unconjugated |



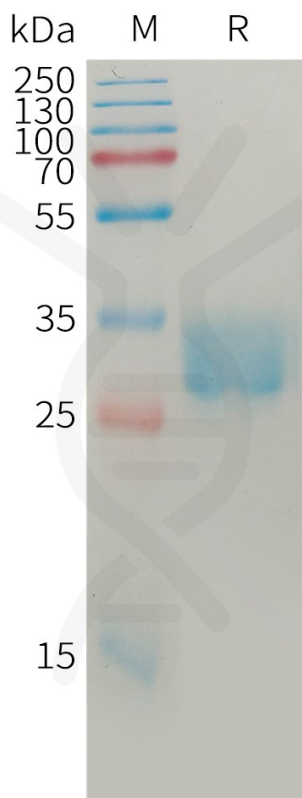


Figure 1. Human SLAMF8 Protein, His Tag on SDS-PAGE under reducing condition.

