

PRODUCT INFORMATION

Tag	C-Flag&Strep Tag
Expression Host	HEK293
Target	SLC2A1
Synonyms	CSE; DYT9; DYT17; DYT18; EIG12; GLUT; GLUT-1; GLUT1; GLUT1DS; HTLVR; PED; SDCHCN
Description	Human SLC2A1-Strep full length protein-synthetic nanodisc
Uniprot ID	P11166
Protein Families	Druggable Genome, ES Cell Differentiation/IPS, Transmembrane
Protein Pathways	Adipocytokine signaling pathway, Pathways in cancer, Renal cell carcinoma
Molecular Weight	The human full length SLC2A1-Strep protein has a MW of 54.1 kDa
Delivery	In Stock
Formulation & Reconstitution	Lyophilized from nanodisc solubilization buffer (20 mM Tris-HCl, 150 mM NaCl, pH 8.0). Normally 5% - 8% trehalose is added as protectants before lyophilization. Please see Certificate of Analysis for specific instructions. Do not use solvents with a pH below 6.5 or those containing high concentrations of divalent metal ions (greater than 5 mM) in subsequent experiments.
Sterility	Products are supplied non-sterile. For cell culture applications, dilute in appropriate medium and sterile-filter (0.22 µm) prior to use.
Storage&Shipping	Store at -20°C to -80°C for 12 months in lyophilized form. After reconstitution, if not intended for use within a month, aliquot and store at -80°C (Avoid repeated freezing and thawing). Lyophilized proteins are shipped at ambient temperature.
Background	A major glucose transporter in the mammalian blood-brain barrier. The protein is found primarily in the cell membrane and on the cell surface, where it can also function as a receptor for human T-cell leukemia virus (HTLV) I and II. Mutations in this gene have been found in a family with paroxysmal exertion-induced dyskinesia.
Usage	Research use only
Conjugate	Unconjugated



ELISA assay to evaluate SLC2A1-Strep-Nanodisc 0.2 μ g Human SLC2A1-Strep-Nanodisc per well

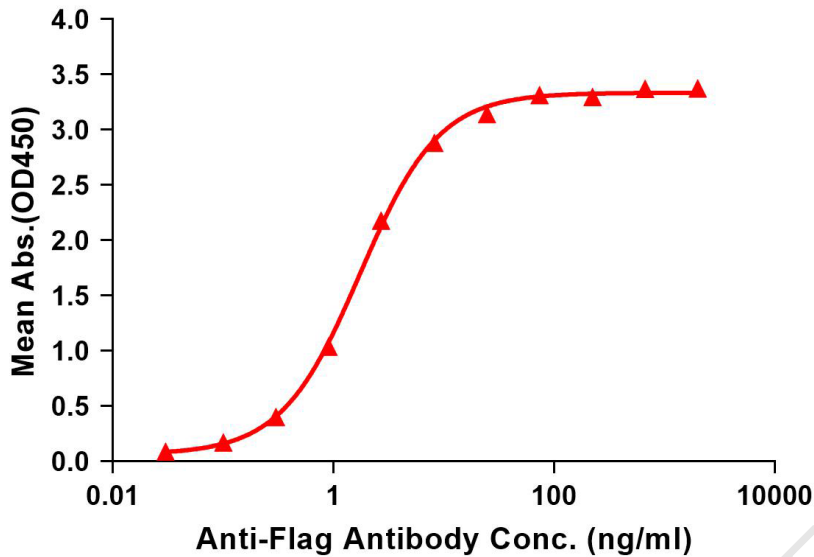


Figure 1. Elisa plates were pre-coated with C-Flag&Strep Tag SLC2A1-Strep-Nanodisc (0.2 μ g/per well). Serial diluted anti-Flag monoclonal antibody solutions were added, washed, and incubated with secondary antibody before Elisa reading. From above data, the EC50 for anti-Flag monoclonal antibody binding with SLC2A1-Strep-nanodisc is 1.744ng/ml.

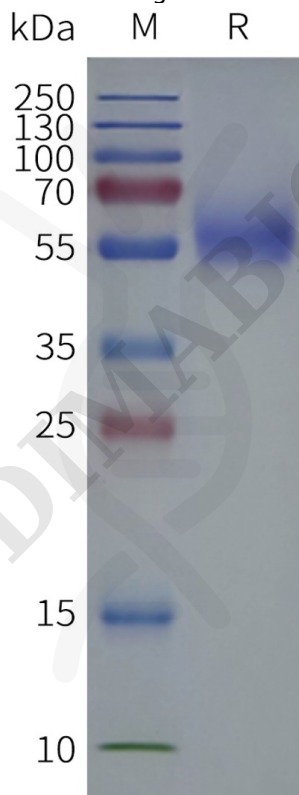


Figure 2. Human SLC2A1-Strep-Nanodisc, C-Flag&Strep Tag on SDS-PAGE

