

PRODUCT INFORMATION

Target	SNCA
Synonyms	NACP, PARK1, PARK4
Description	Recombinant human SNCA Protein with C-terminal human Fc tag
Delivery	In Stock
Uniprot ID	P37840
Expression Host	HEK293
Tag	C-Human Fc tag
Molecular Characterization	SNCA(Met1-Ala140) hFc(Glu99-Ala330)
Molecular Weight	The protein has a predicted molecular mass of 40.6 kDa after removal of the signal peptide.
Purity	The purity of the protein is greater than 95% as determined by SDS-PAGE and Coomassie blue staining.
Formulation & Reconstitution	Lyophilized from sterile PBS, pH 7.4. Normally 5% - 8% trehalose is added as protectants before lyophilization. Please see Certificate of Analysis for specific instructions of reconstitution.
Storage&Shipping	Store at -20°C to -80°C for 12 months in lyophilized form. After reconstitution, if not intended for use within a month, aliquot and store at -80°C (Avoid repeated freezing and thawing). Lyophilized proteins are shipped at ambient temperature.
Background	Alpha-synuclein is a member of the synuclein family, which also includes beta- and gamma-synuclein. Synucleins are abundantly expressed in the brain and alpha- and beta-synuclein inhibit phospholipase D2 selectively. SNCA may serve to integrate presynaptic signaling and membrane trafficking. Defects in SNCA have been implicated in the pathogenesis of Parkinson disease. SNCA peptides are a major component of amyloid plaques in the brains of patients with Alzheimer's disease. Alternatively spliced transcripts encoding different isoforms have been identified for this gene. [provided by RefSeq, Feb 2016]
Usage	Research use only
Conjugate	Unconjugated



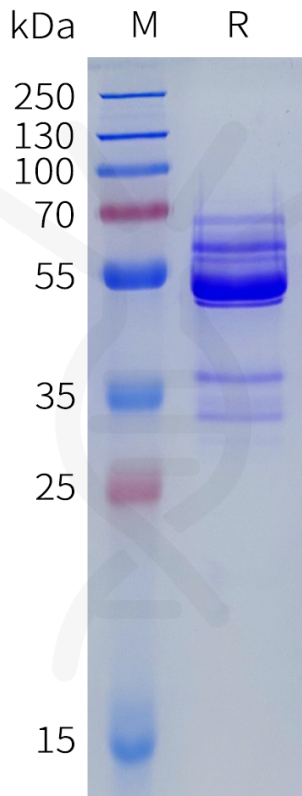


Figure 1. Human SNCA Protein, hFc Tag on SDS-PAGE under reducing condition.

DIMABIO CONFIDENTIAL

