

PRODUCT INFORMATION

Target	STEAP1
Synonyms	STEAP; PRSS24
Description	Recombinant human STEAP1 Protein with N-terminal human Fc tag
Delivery	In Stock
Uniprot ID	Q9UHE8
Expression Host	HEK293
Tag	N-Human Fc tag
Molecular Characterization	hFc(Glu99-Ala330) STEAP1(Arg185-Glu217)
Molecular Weight	The protein has a predicted molecular mass of 32.8 kDa after removal of the signal peptide. The apparent molecular mass of hFc-STEAP1 is approximately 25-55 kDa due to glycosylation.
Purity	The purity of the protein is greater than 95% as determined by SDS-PAGE and Coomassie blue staining.
Formulation & Reconstitution	Lyophilized from sterile PBS, pH 7.4. Normally 5 % - 8% trehalose is added as protectants before lyophilization. Please see Certificate of Analysis for specific instructions of reconstitution.
Storage&Shipping	Store at -20°C to -80°C for 12 months in lyophilized form. After reconstitution, if not intended for use within a month, aliquot and store at -80°C (Avoid repeated freezing and thawing). Lyophilized proteins are shipped at ambient temperature.
Background	This gene is predominantly expressed in prostate tissue, and is found to be upregulated in multiple cancer cell lines. The gene product is predicted to be a six-transmembrane protein, and was shown to be a cell surface antigen significantly expressed at cell-cell junctions. [provided by RefSeq, Jul 2008]
Usage	Research use only
Conjugate	Unconjugated



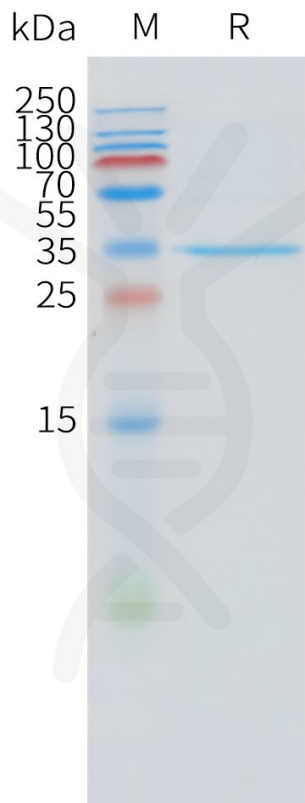


Figure 1. Human STEAP1 Protein, hFc Tag on SDS-PAGE under reducing condition.

