

PRODUCT INFORMATION

|                              |  |
|------------------------------|--|
| Target                       | TIM3   |
| Synonyms                     | HAVCR2;TIM3;TIMD3;FLJ14428;KIM3  |
| Description                  | Recombinant human TIM3 protein with C-terminal mouse Fc and 6×His tag  |
| Delivery                     | In Stock   |
| Uniprot ID                   | Q8TDQ0   |
| Expression Host              | HEK293   |
| Tag                          | C-Mouse Fc and 6×His Tag   |
| Molecular Characterization   | TIM3(Ser22-Gly202) mFc(Pro99-Lys330) 6×His tag   |
| Molecular Weight             | The protein has a predicted molecular mass of 47.5 kDa after removal of the signal peptide.  |
| Purity                       | The purity of the protein is greater than 95% as determined by SDS-PAGE and Coomassie blue staining.   |
| Formulation & Reconstitution | Lyophilized from sterile PBS, pH 7.4. Normally 5 % - 8% trehalose is added as protectants before lyophilization. Please see Certificate of Analysis for specific instructions of reconstitution.   |
| Storage&Shipping             | Store at -20°C to -80°C for 12 months in lyophilized form. After reconstitution, if not intended for use within a month, aliquot and store at -80°C (Avoid repeated freezing and thawing). Lyophilized proteins are shipped at ambient temperature.  |
| Background                   | The protein encoded by this gene belongs to the immunoglobulin superfamily, and TIM family of proteins. CD4-positive T helper lymphocytes can be divided into types 1 (Th1) and 2 (Th2) on the basis of their cytokine secretion patterns. Th1 cells are involved in cell-mediated immunity to intracellular pathogens and delayed-type hypersensitivity reactions, whereas, Th2 cells are involved in the control of extracellular helminthic infections and the promotion of atopic and allergic diseases. This protein is a Th1-specific cell surface protein that regulates macrophage activation, and inhibits Th1-mediated auto- and alloimmune responses, and promotes immunological tolerance. |
| Usage                        | Research use only  |
| Conjugate                    | Unconjugated   |



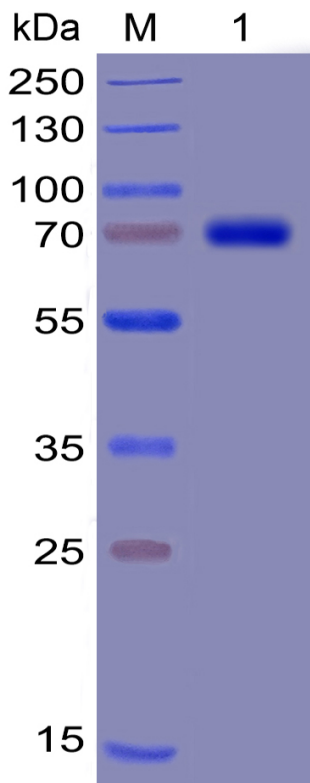


Figure 1. Human TIM3 Protein, mFc-His Tag on SDS-PAGE under reducing condition.

**Human TIM3, mFc-His Tagged protein ELISA**  
0.2 µg of Human TIM3, mFc-His Tagged protein per well

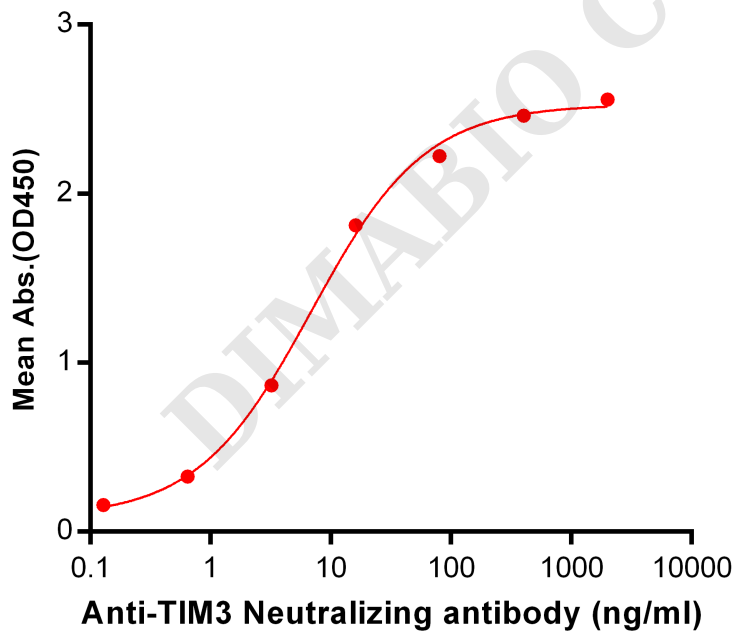


Figure 2. ELISA plate pre-coated by 2 µg/ml (100 µl/well) Human TIM3, mFc-His tagged protein (PME100030) can bind Anti-TIM3 Neutralizing antibody ([getskuurl sku="BME100008"]) in a linear range of 0.64-80 ng/ml.



**Human TIM3, mFc-His Tagged protein ELISA**

0.2 µg of Human TIM3, mFc-His tagged protein per well

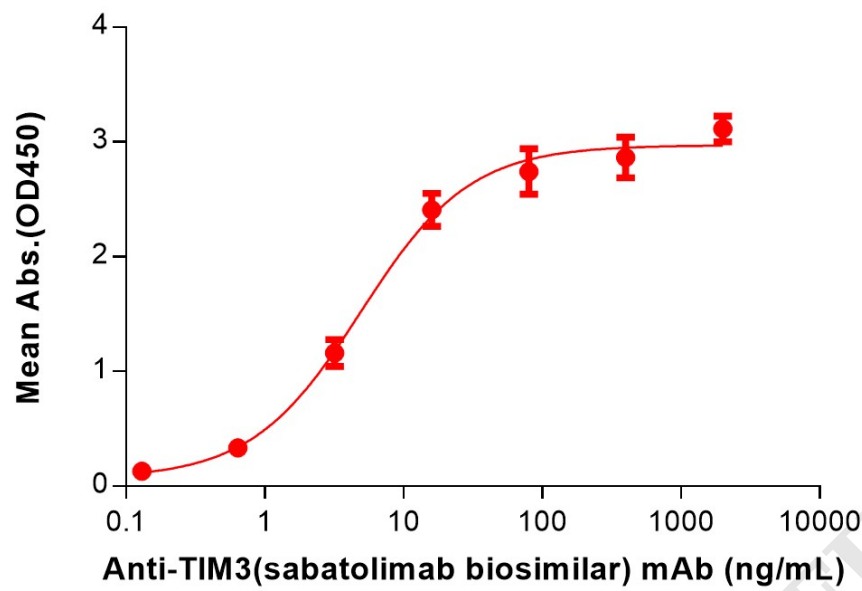


Figure 3. ELISA plate pre-coated by 2 µg/mL (100 µL/well) Human TIM3 Protein, mFc-His Tag (PME100030) can bind Anti-TIM3(sabatolimab biosimilar) mAb (BME100173) in a linear range of 0.64-16 ng/mL.

