

PRODUCT INFORMATION

Target	TNFSF15
Synonyms	TL1; TL1A; VEGI; TNLG1B; VEGI192A
Description	Recombinant human TNFSF15 MTQ Protein with N-terminal 10×His tag
Delivery	In Stock
Uniprot ID	O95150
Expression Host	HEK293
Tag	N-10×His tag
Molecular Characterization	10×His tag MTQ TNFSF15(Leu72-Leu251)
Molecular Weight	The protein has a predicted molecular mass of 26.5 kDa after removal of the signal peptide.
Purity	The purity of the protein is greater than 85% as determined by SDS-PAGE and Coomassie blue staining.
Formulation & Reconstitution	Lyophilized from sterile PBS, pH 7.4. Normally 5 % - 8% trehalose is added as protectants before lyophilization. Please see Certificate of Analysis for specific instructions of reconstitution.
Storage&Shipping	Store at -20°C to -80°C for 12 months in lyophilized form. After reconstitution, if not intended for use within a month, aliquot and store at -80°C (Avoid repeated freezing and thawing). Lyophilized proteins are shipped at ambient temperature.
Sterility	Products are supplied non-sterile. For cell culture applications, dilute in appropriate medium and sterile-filter (0.22 μm) prior to use.
Background	The protein encoded by this gene is a cytokine that belongs to the tumor necrosis factor (TNF) ligand family. This protein is abundantly expressed in endothelial cells, but is not expressed in either B or T cells. The expression of this protein is inducible by TNF and IL-1 alpha. This cytokine is a ligand for receptor TNFRSF25 and decoy receptor TNFRSF21/DR6. It can activate NF-kappaB and MAP kinases, and acts as an autocrine factor to induce apoptosis in endothelial cells. This cytokine is also found to inhibit endothelial cell proliferation, and thus may function as an angiogenesis inhibitor. Two transcript variants encoding different isoforms have been found for this gene. [provided by RefSeq, Feb 2011]
Usage	Research use only
Conjugate	Unconjugated



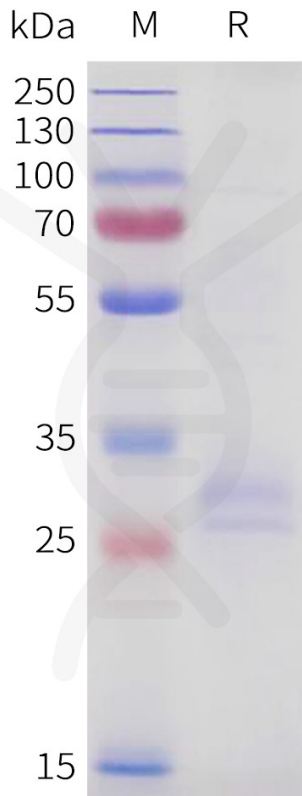


Figure 1. Human TNFSF15 MTQ Protein, N-His Tag on SDS-PAGE under reducing condition.

DIMABIO CONFIDENTIAL

