

PRODUCT INFORMATION

| | |
|---|---|
| Target | Trop2 |
| Synonyms | TACSTD2;GA733-1;M1S1;TROP2 |
| Description | Recombinant human Trop2 protein with C-terminal mouse Fc and 6×His tag |
| Delivery | In Stock |
| Uniprot ID | P09758 |
| Expression Host | HEK293 |
| Tag | C-Mouse Fc and 6×His Tag |
| Molecular Characterization | Trop2(His27-Thr274) mFc(Pro99-Lys330) 6×His tag |
| Molecular Weight | The protein has a predicted molecular mass of 54.9 kDa after removal of the signal peptide. The apparent molecular mass of Trop2-mFc-His is approximately 55-70 kDa due to glycosylation. |
| Purity | The purity of the protein is greater than 95% as determined by SDS-PAGE and Coomassie blue staining. |
| Formulation & Reconstitution | Lyophilized from sterile PBS, pH 7.4. Normally 5 % - 8% trehalose is added as protectants before lyophilization. Please see Certificate of Analysis for specific instructions of reconstitution. |
| Storage&Shipping | Store at -20°C to -80°C for 12 months in lyophilized form. After reconstitution, if not intended for use within a month, aliquot and store at -80°C (Avoid repeated freezing and thawing). Lyophilized proteins are shipped at ambient temperature. |
| Background | This intronless gene encodes a carcinoma-associated antigen. This antigen is a cell surface receptor that transduces calcium signals. Mutations of this gene have been associated with gelatinous drop-like corneal dystrophy. |
| Usage | Research use only |
| Conjugate | Unconjugated |



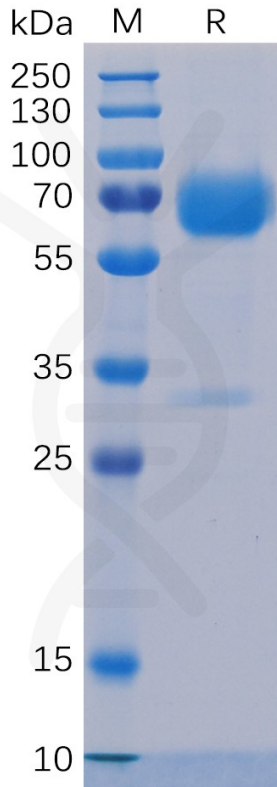


Figure 1. Human Trop2 Protein, mFc-His Tag on SDS-PAGE under reducing condition.

Human Trop2, mFc-His Tagged protein ELISA

0.2 μg of Trop2, mFc-His Tagged protein per well

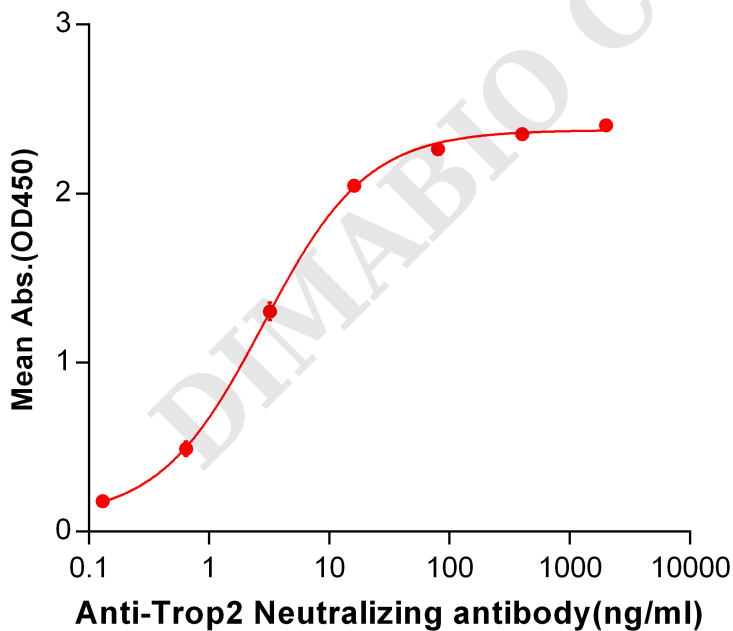


Figure 2. ELISA plate pre-coated by 2 $\mu\text{g}/\text{ml}$ (100 $\mu\text{l}/\text{well}$) Human Trop2, mFc-His tagged protein (PME100501) can bind Anti-Trop2 Neutralizing antibody BME100023 in a linear range of 0.13-16.0 ng/ml.

