

PRODUCT INFORMATION

Target	TSLP
Synonyms	TSLP
Description	Recombinant human TSLP protein with C-terminal human Fc tag
Delivery	In Stock
Uniprot ID	Q969D9
Expression Host	HEK293
Tag	C-Human Fc Tag
Molecular Characterization	TSLP(Tyr29-Gln159) hFc(Glu99-Ala330)
Molecular Weight	The protein has a predicted molecular mass of 41.1 kDa after removal of the signal peptide. The apparent molecular mass of TSLP-hFc is approximately 55-70 kDa due to glycosylation.
Purity	The purity of the protein is greater than 95% as determined by SDS-PAGE and Coomassie blue staining.
Formulation & Reconstitution	Lyophilized from sterile PBS, pH 7.4. Normally 5 % - 8% trehalose is added as protectants before lyophilization. Please see Certificate of Analysis for specific instructions of reconstitution.
Storage & Shipping	Store at -20°C to -80°C for 12 months in lyophilized form. After reconstitution, if not intended for use within a month, aliquot and store at -80°C (Avoid repeated freezing and thawing). Lyophilized proteins are shipped at ambient temperature.
Background	This gene encodes a hemopoietic cytokine proposed to signal through a heterodimeric receptor complex composed of the thymic stromal lymphopoietin receptor and the IL-7R alpha chain. It mainly impacts myeloid cells and induces the release of T cell-attracting chemokines from monocytes and enhances the maturation of CD11c(+) dendritic cells. The protein promotes T helper type 2 (TH2) cell responses that are associated with immunity in various inflammatory diseases, including asthma, allergic inflammation and chronic obstructive pulmonary disease. The protein is therefore considered a potential therapeutic target for the treatment of such diseases. In addition, the shorter (predominant) isoform is an antimicrobial protein, displaying antibacterial and antifungal activity against B. cereus, E. coli, E. faecalis, S. mitis, S. epidermidis, and C. albicans. Alternative splicing of this gene results in multiple transcript variants. [provided by RefSeq, Jul 2020]
Usage	Research use only
Conjugate	Unconjugated



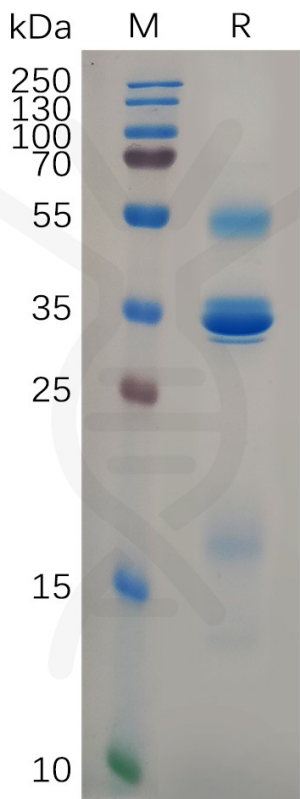


Figure 1. Human TSLP Protein, hFc Tag on SDS-PAGE under reducing condition.

Human TSLP, hFc Tagged protein ELISA
0.5 μ g of Human TSLP, hFc tagged protein per well

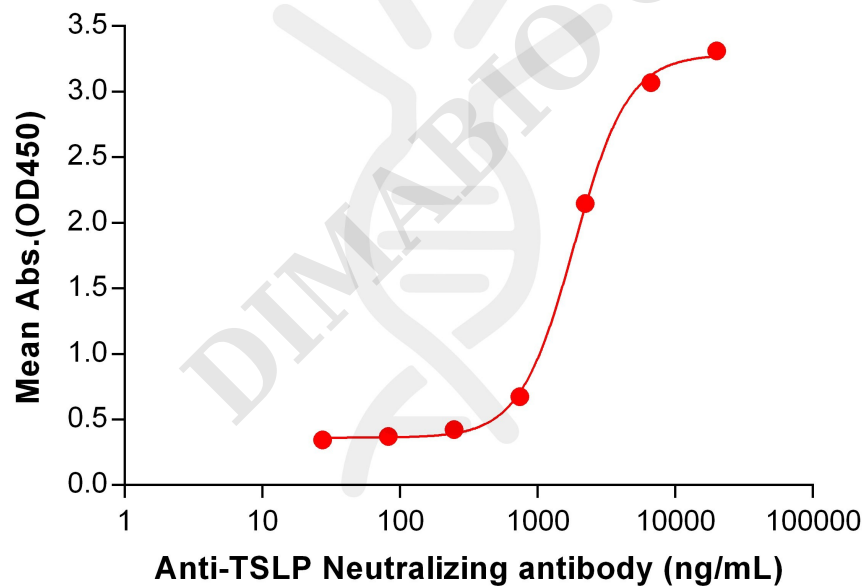


Figure 2. ELISA plate pre-coated by 5 μ g/mL (100 μ L/well) Human TSLP Protein, hFc Tag (PME100637) can bind Anti-TSLP Neutralizing antibody BME100112 in a linear range of 741-6667 ng/mL.



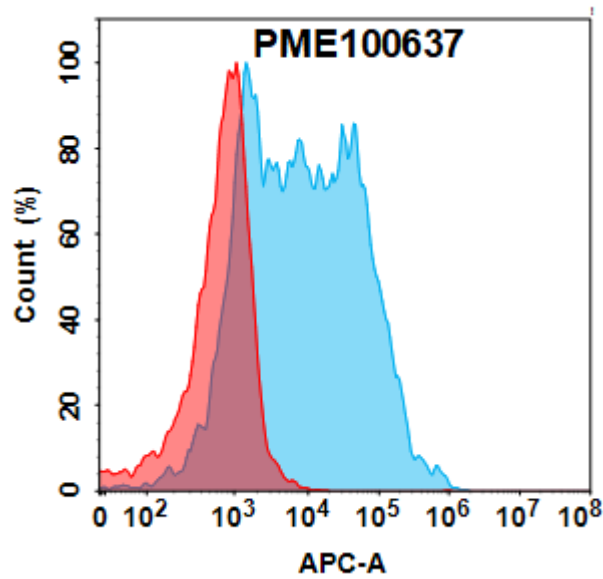


Figure 3. Flow cytometry analysis with 1µg/mL Human TSLP Protein, hFc Tag(PME100637) on HEK293 cells transfected with Human CRLF2 protein (Blue histogram) or HEK293 transfected with irrelevant protein (Red histogram).

