

PRODUCT INFORMATION

Target	CCR1
Synonyms	Cmkbr1; Mip-1a-R
Description	Recombinant mouse CCR1 protein with C-terminal human Fc tag
Delivery	In Stock
Uniprot ID	P51675
Expression Host	HEK293
Tag	C-Human Fc tag
Molecular Characterization	Mouse CCR1(Met1-Ala34)+hFc(Glu99-Ala330)
Molecular Weight	The protein has a predicted molecular mass of 29.9 kDa after removal of the signal peptide.
Purity	The purity of the protein is greater than 95% as determined by SDS-PAGE and Coomassie blue staining.
Formulation & Reconstitution	Lyophilized from sterile PBS, pH 7.4. Normally 5 % - 8% trehalose is added as protectants before lyophilization. Please see Certificate of Analysis for specific instructions of reconstitution.
Storage&Shipping	Store at -20°C to -80°C for 12 months in lyophilized form. After reconstitution, if not intended for use within a month, aliquot and store at -80°C (Avoid repeated freezing and thawing). Lyophilized proteins are shipped at ambient temperature.
Background	Enables C-C chemokine receptor activity. Involved in negative regulation of innate immune response. Acts upstream of or within inflammatory response; leukocyte chemotaxis; and myeloid cell differentiation. Predicted to be located in neuronal cell body and plasma membrane. Predicted to be active in cytoplasm and external side of plasma membrane. Is expressed in several structures, including aorta-gonad-mesonephros; extraembryonic component; limb; and liver. Used to study Coronavirus infectious disease. Human ortholog(s) of this gene implicated in allergic contact dermatitis and rheumatoid arthritis. Orthologous to human CCR1 (C-C motif chemokine receptor 1). [provided by Alliance of Genome Resources, Apr 2025]
Usage	Research use only
Conjugate	Unconjugated



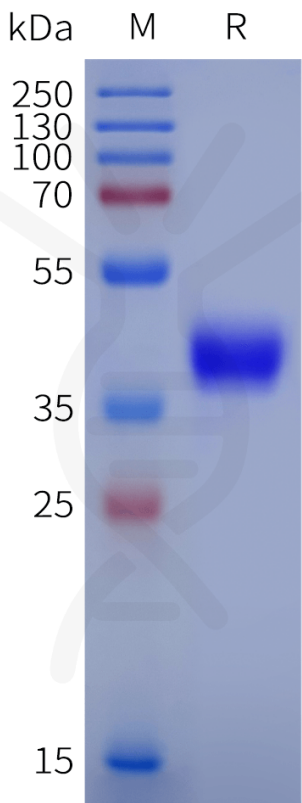
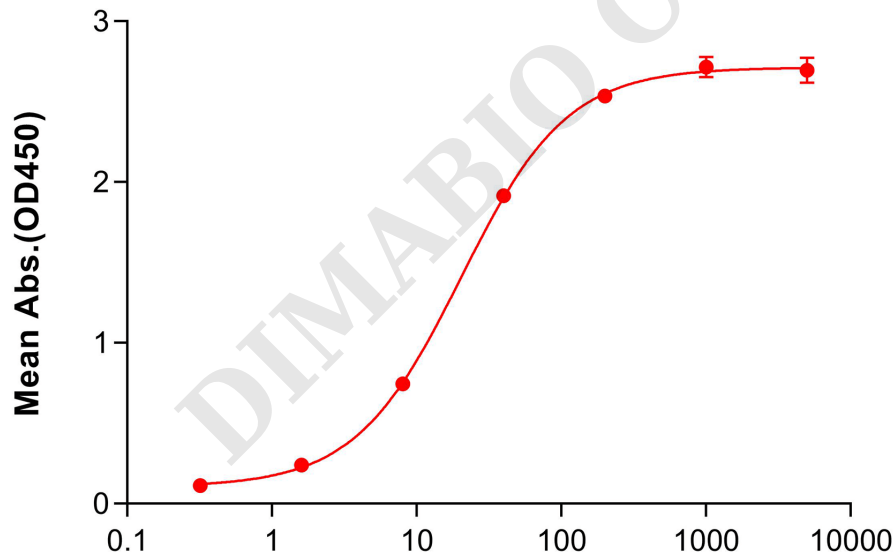


Figure 1. Mouse CCR1 Protein, hFc Tag on SDS-PAGE under reducing condition.

Mouse CCR1, hFc Tagged Protein ELISA
0.2 µg of Mouse CCR1, hFc tagged protein per well



Anti-CCR1 antibody(DMC465); IgG1 Chimeric mAb (ng/mL)

Figure 2. ELISA plate pre-coated by 2 µg/mL (100 µL/well) Mouse CCR1 Protein, hFc Tag (PME-M100130) can bind Anti-CCR1 antibody(DMC465); IgG1 Chimeric mAb (DMC100465) in a linear range of 8-40 ng/mL.

