

PRODUCT INFORMATION

Target	CCR6
Synonyms	CCR-6; KY411; Cmkbr6; CC-CKR-6
Description	Recombinant mouse CCR6 protein with C-terminal human Fc tag
Delivery	In Stock
Uniprot ID	O54689
Expression Host	HEK293
Tag	C-Human Fc tag
Molecular Characterization	Mouse CCR6(Met1-Val39) hFc(Glu99-Ala330)
Molecular Weight	The protein has a predicted molecular mass of 30.7 kDa after removal of the signal peptide. The apparent molecular mass of mCCR6-hFc is approximately 35-55 kDa due to glycosylation.
Purity	The purity of the protein is greater than 95% as determined by SDS-PAGE and Coomassie blue staining.
Formulation & Reconstitution	Lyophilized from sterile PBS, pH 7.4. Normally 5 % - 8% trehalose is added as protectants before lyophilization. Please see Certificate of Analysis for specific instructions.
Storage & Shipping	Store at -20°C to -80°C for 12 months in lyophilized form. After reconstitution, if not intended for use within a month, aliquot and store at -80°C (Avoid repeated freezing and thawing). Lyophilized proteins are shipped at ambient temperature.
Background	Enables C-C chemokine binding activity and C-C chemokine receptor activity. Involved in several processes, including immune system development; leukocyte migration; and regulation of cell motility. Located in external side of plasma membrane; sperm plasma membrane; and sperm principal piece. Is expressed in several structures, including central nervous system; gut; immune system; male reproductive gland or organ; and retina. Orthologous to human CCR6 (C-C motif chemokine receptor 6). [provided by Alliance of Genome Resources, Apr 2022]
Usage	Research use only



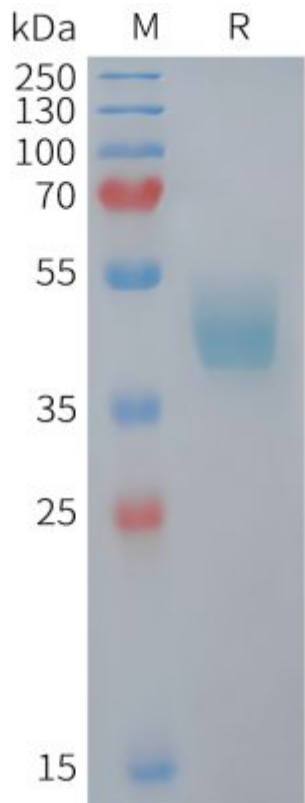


Figure 1. Mouse CCR6 Protein, hFc Tag on SDS-PAGE under reducing condition.

