

PRODUCT INFORMATION

Target	CCR8
Synonyms	CC-CCR-8;CCR-8;CDw198;CKRL1;CMKBR8;CMKBRL2;CY6;GPCRY6;TER1
Description	Recombinant mouse CCR8 protein with C-terminal human Fc tag
Delivery	In Stock
Uniprot ID	P56484
Expression Host	HEK293
Tag	C-Human Fc Tag
Molecular Characterization	Mouse CCR8(Met1-Met33) hFc(Glu99-Ala330)
Molecular Weight	The protein has a predicted molecular mass of 30.0 kDa after removal of the signal peptide. The apparent molecular mass of mCCR8-hFc is approximately 35-55 kDa due to glycosylation.
Purity	The purity of the protein is greater than 95% as determined by SDS-PAGE and Coomassie blue staining.
Formulation & Reconstitution	Lyophilized from sterile PBS, pH 7.4. Normally 5 % – 8% trehalose is added as protectants before lyophilization. Please see Certificate of Analysis for specific instructions of reconstitution.
Storage & Shipping	Store at -20°C to -80°C for 12 months in lyophilized form. After reconstitution, if not intended for use within a month, aliquot and store at -80°C (Avoid repeated freezing and thawing). Lyophilized proteins are shipped at ambient temperature.
Background	Receptor for the CCL1/SCY1/TCA-3 chemokine.[UniProtKB/Swiss-Prot Function]
Usage	Research use only
Conjugate	Unconjugated

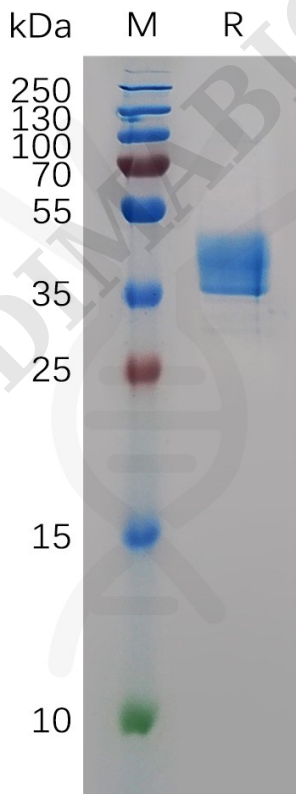


Figure 1. Mouse CCR8 Protein, hFc Tag on SDS-PAGE under reducing condition.
Address: Wuhan Institute of Biotechnology B7, Biolake No.666
Gaoxin Road, Wuhan, Hubei, China
Telephone: +1 2409940618(USA)
/+86-18062749453(China)
/+86-400-006-0995(China)

Email: info@dimabio.com
Website: www.dimabio.com



Mouse CCR8, hFc Tagged protein ELISA

0.2 µg of Mouse CCR8, hFc tagged protein per well

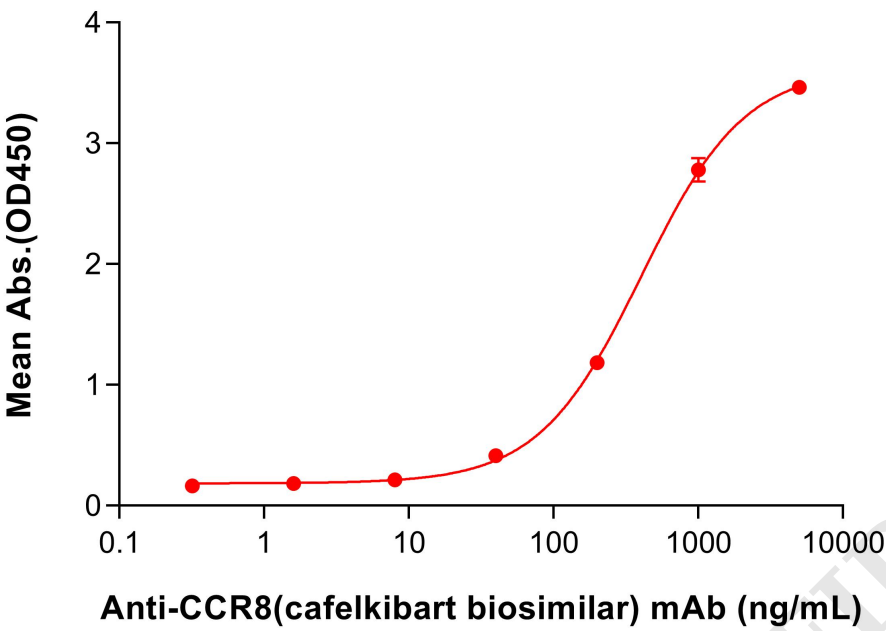


Figure 2. ELISA plate pre-coated by 2 µg/mL (100 µL/well) Mouse CCR8 Protein, hFc Tag (PME-M100034) can bind Anti-CCR8(cafekibart biosimilar) mAb (BME100445) in a linear range of 200–1000 ng/mL.

