

PRODUCT INFORMATION

| | |
|------------------------------|---|
| Target | CDH6 |
| Synonyms | CAD6 |
| Description | Recombinant mouse CDH6 protein with C-terminal 10×His tag |
| Delivery | In Stock |
| Uniprot ID | P97326 |
| Expression Host | HEK293 |
| Tag | C-10×His tag |
| Molecular Characterization | Mouse CDH6(Thr19-Ala615) 10×His tag |
| Molecular Weight | The protein has a predicted molecular mass of 67.8 kDa after removal of the signal peptide. The apparent molecular mass of mCDH6-His is approximately 70-130 kDa due to glycosylation. |
| Purity | The purity of the protein is greater than 85% as determined by SDS-PAGE and Coomassie blue staining. |
| Formulation & Reconstitution | Lyophilized from sterile PBS, pH 7.4. Normally 5 % - 8% trehalose is added as protectants before lyophilization. Please see Certificate of Analysis for specific instructions of reconstitution. |
| Storage & Shipping | Store at -20°C to -80°C for 12 months in lyophilized form. After reconstitution, if not intended for use within a month, aliquot and store at -80°C (Avoid repeated freezing and thawing). Lyophilized proteins are shipped at ambient temperature. |
| Background | This gene encodes a member of the cadherin family of calcium-dependent glycoproteins that mediate cell adhesion and regulate many morphogenetic events during development. The encoded preproprotein is further processed to generate a mature protein. Mice lacking the encoded protein exhibit delay in mesenchyme-to-epithelial conversion and a loss of nephrons. Multiple distinct genes of the cadherin family, including this gene, are found on chromosome 15. [provided by RefSeq, Oct 2015] |
| Usage | Research use only |



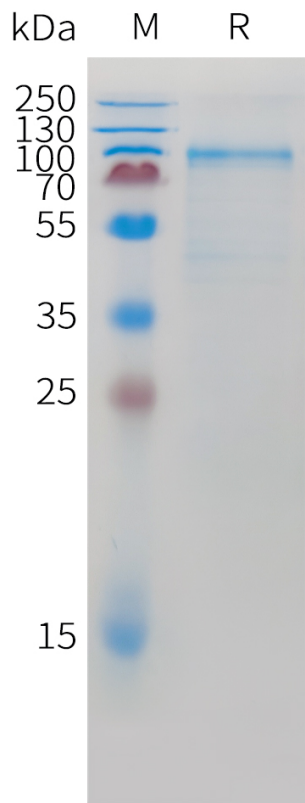


Figure 1. Mouse CDH6 Protein, His Tag on SDS-PAGE under reducing condition.

