

PRODUCT INFORMATION

Target	CXCR2
Synonyms	CD128; IL8RA; Il8rb; CDw128; Cmkar2; Gpcr16; IL-8Rh; IL-8rb; mL-8RH
Description	Recombinant Mouse CXCR2 Protein with C-terminal human Fc tag
Delivery	In Stock
Uniprot ID	P35343
Expression Host	HEK293
Tag	C-Human Fc tag
Molecular Characterization	Mouse CXCR2(Met1-Ile45) hFc(Glu99-Ala330)
Molecular Weight	The protein has a predicted molecular mass of 31.2 kDa after removal of the signal peptide.
Purity	The purity of the protein is greater than 95% as determined by SDS-PAGE and Coomassie blue staining.
Formulation & Reconstitution	Lyophilized from sterile PBS, pH 7.4. Normally 5 % - 8% trehalose is added as protectants before lyophilization. Please see Certificate of Analysis for specific instructions of reconstitution.
Storage&Shipping	Store at -20°C to -80°C for 12 months in lyophilized form. After reconstitution, if not intended for use within a month, aliquot and store at -80°C (Avoid repeated freezing and thawing). Lyophilized proteins are shipped at ambient temperature.
Sterility	Products are supplied non-sterile. For cell culture applications, dilute in appropriate medium and sterile-filter (0.22 µm) prior to use.
Background	Enables chemokine receptor activity. Acts upstream of or within negative regulation of apoptotic process. Predicted to be located in several cellular components, including cell surface; mast cell granule; and mitotic spindle. Predicted to be active in external side of plasma membrane. Is expressed in several structures, including alimentary system; central nervous system; embryo mesenchyme; epithelium; and heart. Human ortholog(s) of this gene implicated in IgA glomerulonephritis; WHIM syndrome 2; acute pyelonephritis; end stage renal disease; and urinary bladder cancer. Orthologous to human CXCR2 (C-X-C motif chemokine receptor 2). [provided by Alliance of Genome Resources, May 2025]
Usage	Research use only
Conjugate	Unconjugated



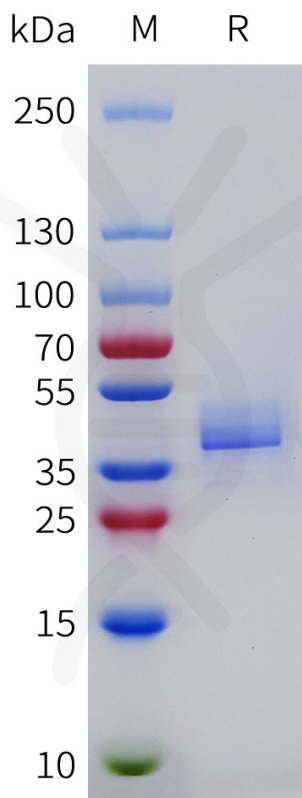


Figure 1. Mouse CXCR2 Protein, hFc Tag on SDS-PAGE under reducing condition.

DIMABIO CONFIDENTIAL

