

PRODUCT INFORMATION

Target	KLRG1
Synonyms	MAFA; 2F1-Ag; MAFA-L
Description	Recombinant mouse KLRG1 Protein with N-terminal human Fc tag
Delivery	In Stock
Uniprot ID	O88713
Expression Host	HEK293
Tag	N-Human Fc tag
Molecular Characterization	hFc(Glu99-Ala330)+Mouse KLRG1(Gln57-Tyr188)
Molecular Weight	The protein has a predicted molecular mass of 41.2 kDa after removal of the signal peptide.
Purity	The purity of the protein is greater than 90% as determined by SDS-PAGE and Coomassie blue staining.
Formulation & Reconstitution	Lyophilized from sterile PBS, pH 7.4. Normally 5 % - 8% trehalose is added as protectants before lyophilization. Please see Certificate of Analysis for specific instructions of reconstitution.
Storage & Shipping	Store at -20°C to -80°C for 12 months in lyophilized form. After reconstitution, if not intended for use within a month, aliquot and store at -80°C (Avoid repeated freezing and thawing). Lyophilized proteins are shipped at ambient temperature.
Background	Predicted to enable carbohydrate binding activity. Predicted to be involved in innate immune response. Predicted to act upstream of or within cell surface receptor signaling pathway. Predicted to be located in intracellular membrane-bounded organelle. Orthologous to human KLRG1 (killer cell lectin like receptor G1). [provided by Alliance of Genome Resources, Apr 2025]
Usage	Research use only
Conjugate	Unconjugated



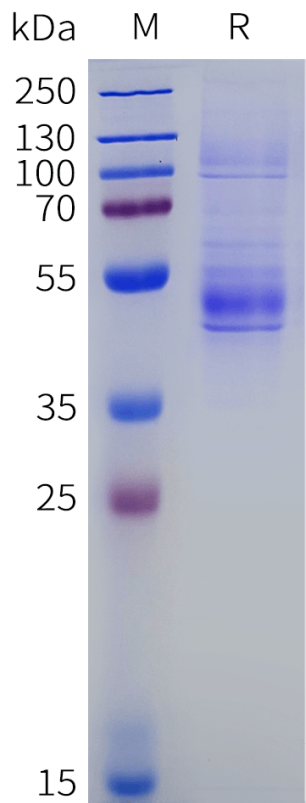


Figure 1. Mouse KLRG1 Protein, hFc Tag on SDS-PAGE under reducing condition.

