

**PRODUCT INFORMATION**

<b>Target</b>	PSMA
<b>Synonyms</b>	FOLH1; GCP2; mopsm
<b>Description</b>	Recombinant mouse PSMA protein with N-terminal 10×His tag
<b>Delivery</b>	In Stock
<b>Uniprot ID</b>	O35409
<b>Expression Host</b>	HEK293
<b>Tag</b>	N-10×His tag
<b>Molecular Characterization</b>	10×His tag Mouse PSMA(Lys45-Ala752)
<b>Molecular Weight</b>	The protein has a predicted molecular mass of 80.9 kDa after removal of the signal peptide.
<b>Purity</b>	The purity of the protein is greater than 85% as determined by SDS-PAGE and Coomassie blue staining.
<b>Formulation &amp; Reconstitution</b>	Lyophilized from sterile PBS, pH 7.4. Normally 5 % - 8% trehalose is added as protectants before lyophilization. Please see Certificate of Analysis for specific instructions.
<b>Storage&amp;Shipping</b>	Store at -20°C to -80°C for 12 months in lyophilized form. After reconstitution, if not intended for use within a month, aliquot and store at -80°C (Avoid repeated freezing and thawing). Lyophilized proteins are shipped at ambient temperature.
<b>Sterility</b>	Products are supplied non-sterile. For cell culture applications, dilute in appropriate medium and sterile-filter (0.22 µm) prior to use.
<b>Background</b>	Enables carboxypeptidase activity and dipeptidase activity. Acts upstream of or within folic acid-containing compound metabolic process and proteolysis. Is integral component of plasma membrane. Is expressed in central nervous system; male reproductive gland or organ; metanephros; and submandibular gland. Orthologous to several human genes including FOLH1 (folate hydrolase 1). [provided by Alliance of Genome Resources, Apr 2022]
<b>Usage</b>	Research use only
<b>Conjugate</b>	Unconjugated



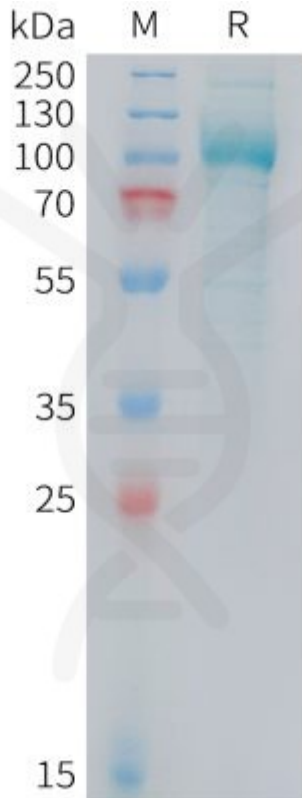


Figure 1. Mouse PSMA Protein, His Tag on SDS-PAGE under reducing condition.

