

PRODUCT INFORMATION

Clone ID	DM6
Target	BCMA
Synonyms	TNFRSF17
Host Species	Rabbit
Description	PE-conjugated Anti-BCMA antibody(DM6); Rabbit mAb
Delivery	In Stock
Uniprot ID	Q02223
IgG type	Rabbit IgG
Clonality	Monoclonal
Reactivity	Human
Applications	Flow Cyt
Recommended Dilutions	Flow Cyt 1:400
Purification	Purified from cell culture supernatant by affinity chromatography
Endotoxin	Less than 1.0 EU/μg by the LAL method. For <1 EU/mg requirements, please contact us for customization.
Formulation & Reconstitution	Liquid PBS with 0.05% Proclin300, 1% BSA
Storage&Shipping	Store at 2°C-8°C for 6 months
Sterility	Products are supplied non-sterile. For cell culture applications, dilute in appropriate medium and sterile-filter (0.22 μm) prior to use.
Background	The protein encoded by this gene is a member of the TNF-receptor superfamily. This receptor is preferentially expressed in mature B lymphocytes; and may be important for B cell development and autoimmune response. This receptor has been shown to specifically bind to the tumor necrosis factor (ligand) superfamily; member 13b (TNFSF13B:TALL-1:BAFF); and to lead to NF-kappaB and MAPK8:JNK activation. This receptor also binds to various TRAF family members; and thus may transduce signals for cell survival and proliferation. [provided by RefSeq; Jul 2008]
Usage	Research use only
Conjugate	PE-conjugated
DIMA Disclaimer	All DIMA recombinant antibodies are genuinely generated by DIMA Biotech. They are all under patent application. Any protein sequencing or reverse engineering attempt is prohibited. We are actively scr



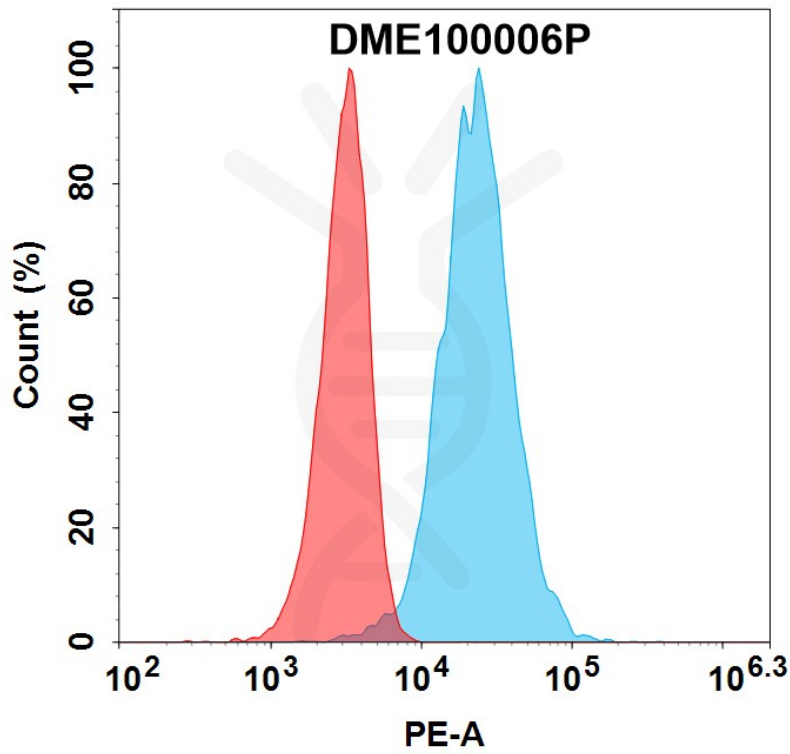


Figure 1. Flow cytometry analysis with 100 μ l/test (1:400) PE-conjugated Anti-BCMA antibody(DM6); Rabbit mAb (DME100006P) (Blue histogram) or isotype control mAb (Red histogram) on K562-BCMA cells.

