

PRODUCT INFORMATION

Clone ID	DM201
Target	CD30 Ligand
Synonyms	CD30-L;CD153;TNFSF8;CD30L;CD30LG;CD153 antigen;CD30 antigen ligand;CD30 Ligand
Host Species	Rabbit
Description	PE-conjugated Anti-CD30 Ligand antibody(DM201); Rabbit mAb
Delivery	In Stock
Uniprot ID	P32971
IgG type	Rabbit IgG
Clonality	Monoclonal
Reactivity	Human
Applications	Flow Cyt
Recommended Dilutions	Flow Cyt 0.5µl/test
Purification	Purified from cell culture supernatant by affinity chromatography
Endotoxin	Less than 1.0 EU/µg by the LAL method. For <1 EU/mg requirements, please contact us for customization.
Formulation & Reconstitution	Liquid,PBS with,0.18%BSA□0.1%Proclin300
Storage&Shipping	Store at 2°C-8°C for 6 months
Sterility	Products are supplied non-sterile. For cell culture applications, dilute in appropriate medium and sterile-filter (0.22 µm) prior to use. The protein encoded by this gene is a cytokine that belongs to the tumor necrosis factor (TNF) ligand family. This cytokine is a ligand for TNFRSF8:CD30; which is a cell surface antigen and a marker for Hodgkin lymphoma and related hematologic malignancies. The engagement of this cytokine expressed on B cell surface plays an inhibitory role in modulating Ig class switch. This cytokine was shown to enhance cell proliferation of some lymphoma cell lines; while to induce cell death and reduce cell proliferation of other lymphoma cell lines. The pleiotropic biologic activities of this cytokine on different CD30 lymphoma cell lines may play a pathophysiologic role in Hodgkin's and some non-Hodgkin's lymphomas. Two transcript variants encoding different isoforms have been found for this gene.
Background	
Usage	Research use only
Conjugate	PE-conjugated
DIMA Disclaimer	All DIMA recombinant antibodies are genuinely generated by DIMA Biotech. They are all under patent application. Any protein sequencing or reverse engineering attempt is prohibited. We are actively scr



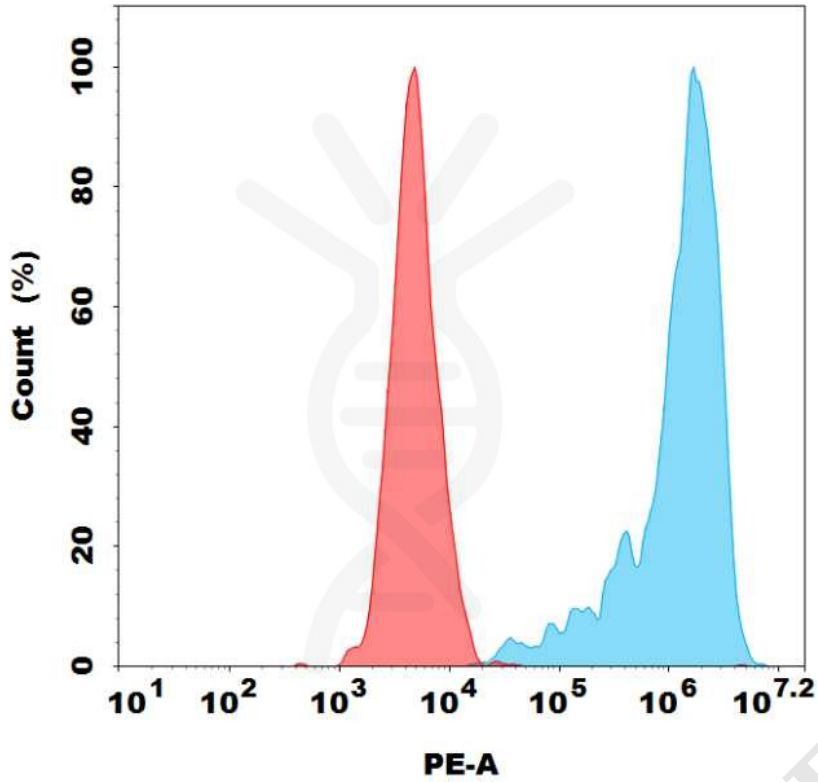


Figure 1. Flow cytometry analysis with 0.5ul/test PE-conjugated Anti-CD30L (DM201) on 293T-CD30L stable expression cell line (Blue histogram) or 293T (Red histogram).

