

PRODUCT INFORMATION

Common Name	AMT-707; CUSP-06
Conjugate	PE-conjugated
Synonyms	CADH6;K-cadherin
Applications	Flow Cyt
Endotoxin	Less than 1.0 EU/ μ g by the LAL method. For <1 EU/mg requirements, please contact us for customization.
Recommended Dilutions	Flow Cyt 1:350
Formulation & Reconstitution	Liquid PBS with 0.05% Proclin300, 1% BSA
Host Species	Humanized
IgG type	Human IgG1(E356D,M358L) - kappa
Reactivity	Human
Target	CDH6
Uniprot ID	P55285
Description	PE-conjugated Anti-CDH6(AMT-707 biosimilar) mAb
Delivery	In Stock
Storage&Shipping	Store at 2°C-8°C for 6 months
Background	Research grade biosimilar. Not for use in therapeutic or diagnostic procedures for humans or animals.
Usage	Research use only



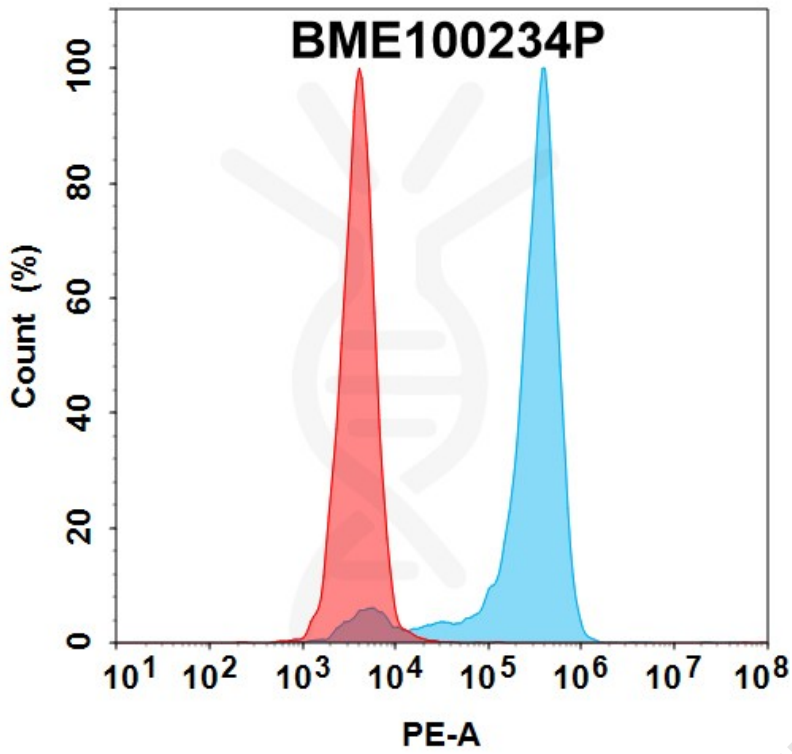


Figure 1. Flow cytometry analysis with 100 μ l/test (1:350) PE-conjugated Anti-CDH6(AMT-707 biosimilar) mAb (BME100234P) (Blue histogram) or isotype control mAb (Red histogram) on K562-CDH6 cells.

