

PRODUCT INFORMATION

Common Name	GC-182,IMAB-362,IMAB362,claudiximab
Conjugate	PE-conjugated
Synonyms	GC-182;MAB-362;MAB362;laudiximab
Applications	Flow Cyt
Endotoxin	Less than 1.0 EU/ μ g by the LAL method. For <1 EU/mg requirements, please contact us for customization.
Recommended Dilutions	Flow Cyt 0.5 μ l/test
Formulation & Reconstitution	Liquid,PBS with,0.18%BSA□0.1%Proclin300
Host Species	Chimeric
IgG type	Human IgG1 - kappa
Reactivity	Human
Target	CLDN18.2
Uniprot ID	P56856
Description	PE-conjugated Anti-CLDN18.2 (zolbetuximab biosimilar) mAb
Delivery	In Stock
Storage&Shipping	Store at 2°C-8°C for 6 months
Background	Research grade biosimilar. Not for use in therapeutic or diagnostic procedures for humans or animals.
Usage	Research use only



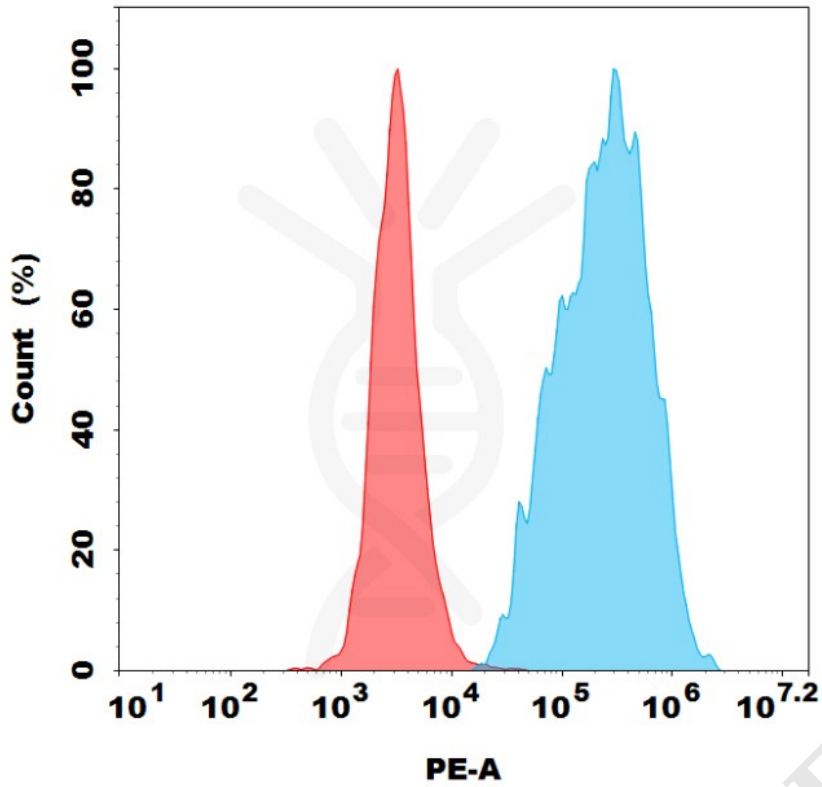


Figure 1. Flow cytometry analysis with 0.5ul/test Anti-CLDN18.2 (zolbetuximab biosimilar) on AGS-CLDN18.2 stable expression cell line (Blue histogram) or 293T (Red histogram).

