

## PRODUCT INFORMATION

<b>Clone ID</b>	DMC679
<b>Target</b>	CXCR5
<b>Synonyms</b>	Blr1; CXCR5; CXCR-5; GPCR6; MDR15
<b>Host Species</b>	Rabbit
<b>Description</b>	PE-conjugated Anti-CXCR5 antibody(DMC679), IgG1 Chimeric mAb
<b>Delivery</b>	In Stock
<b>Uniprot ID</b>	P32302; A0N0R2; A8K647; Q2YD84
<b>IgG type</b>	Rabbit/Human Fc chimeric IgG1
<b>Clonality</b>	Monoclonal
<b>Reactivity</b>	Human
<b>Applications</b>	Flow Cyt
<b>Recommended Dilutions</b>	Flow Cyt 1μl/test
<b>Purification</b>	Purified from cell culture supernatant by affinity chromatography
<b>Formulation &amp; Reconstitution</b>	Liquid, PBS with, 0.18% BSA, 0.1% Proclin300
<b>Storage &amp; Shipping</b>	Store at 2°C-8°C for 6 months
<b>Background</b>	Cytokine receptor that binds to B-lymphocyte chemoattractant (BLC). Involved in B-cell migration into B-cell follicles of spleen and Peyer patches but not into those of mesenteric or peripheral lymph nodes.[UniProtKB:Swiss-Prot Function]
<b>Usage</b>	Research use only
<b>Conjugate</b>	PE-conjugated
<b>DIMA Disclaimer</b>	All DIMA recombinant antibodies are genuinely generated by DIMA Biotech. They are all under patent application. Any protein sequencing or reverse engineering attempt is prohibited. We are actively scrutinizing all patent application to ensure no IP infringement.



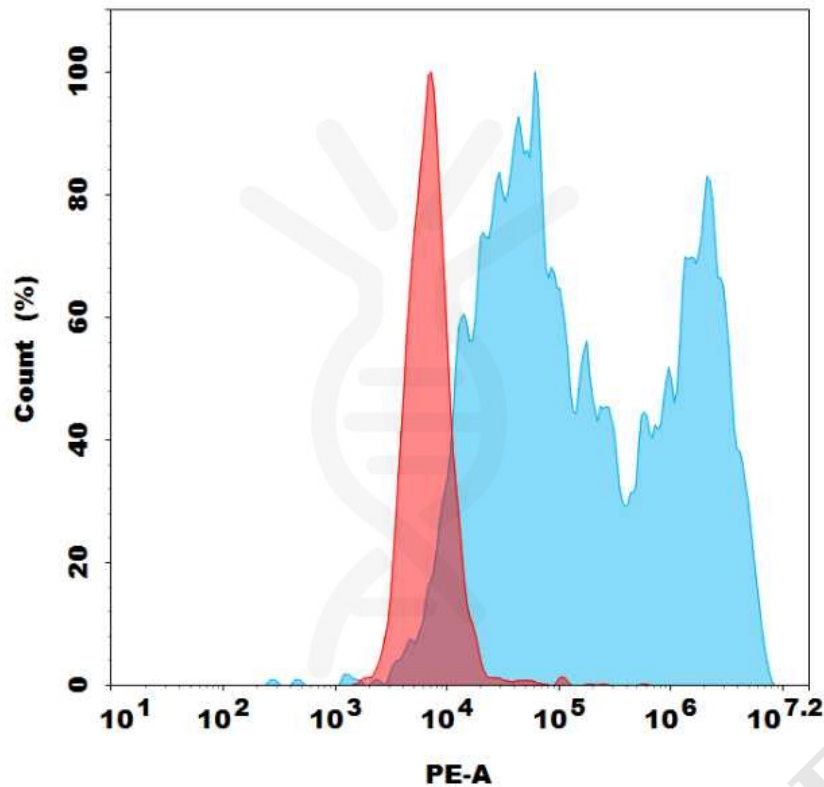


Figure 1. Flow cytometry analysis with 1 μl/test PE-conjugated Anti-CXCR5 antibody(DMC679) on HEK293 cells transfected with Human CXCR5 protein (Blue histogram) or HEK293 transfected with irrelevant protein (Red histogram).

