

**PRODUCT INFORMATION**

<b>Common Name</b>	GC33, RG7686, RO5137382
<b>Synonyms</b>	DGSX;GTR2-2;MXR7;OCI-5;SDYS;SGB;SGBS;SGBS1
<b>Conjugate</b>	PE-conjugated
<b>Applications</b>	Flow Cyt
<b>Endotoxin</b>	Less than 1.0 EU/ $\mu$ g by the LAL method. For <1 EU/mg requirements, please contact us for customization.
<b>Recommended Dilutions</b>	Flow Cyt 1:55
<b>Host Species</b>	Humanized
<b>IgG type</b>	Human IgG1 - kappa
<b>Reactivity</b>	Human
<b>Target</b>	GPC3
<b>Uniprot ID</b>	P51654
<b>Description</b>	PE-conjugated Anti-GPC3(codrituzumab biosimilar) mAb
<b>Delivery</b>	In Stock
<b>Storage&amp;Shipping</b>	Store at 2°C-8°C for 6 months
<b>Sterility</b>	Products are supplied non-sterile. For cell culture applications, dilute in appropriate medium and sterile-filter (0.22 $\mu$ m) prior to use.
<b>Formulation &amp; Reconstitution</b>	Liquid,PBS with 0.1% Proclin300, 0.18% BSA
<b>Background</b>	Research grade biosimilar. Not for use in therapeutic or diagnostic procedures for humans or animals.
<b>Usage</b>	Research use only



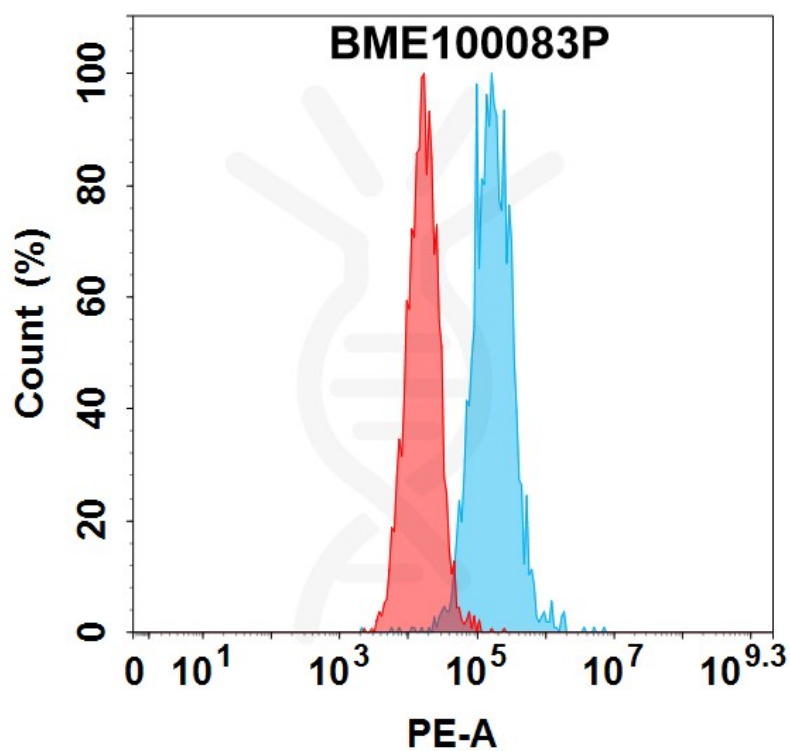


Figure 1. Flow cytometry analysis with 100  $\mu$ l/test (1:55) PE-conjugated Anti-GPC3(codrituzumab biosimilar) mAb (BME100083P) (Blue histogram) or isotype control mAb (Red histogram) on HuH7 cells.

DIMABIO CONFIDENTIAL

