

PRODUCT INFORMATION

Common Name	5F9,MLN2045
Conjugate	PE-conjugated
Synonyms	DIAR6;GC-C;GUC2C;MECIL;MUCIL;STAR
Applications	Flow Cyt
Endotoxin	Less than 1.0 EU/μg by the LAL method. For <1 EU/mg requirements, please contact us for customization.
Recommended Dilutions	Flow Cyt 1μl/test
Formulation & Reconstitution	Liquid,PBS with,0.18%BSA□0.1%Proclin300
Host Species	Homo sapiens
IgG type	Human IgG1 - kappa
Reactivity	Human
Target	GUCY2C
Uniprot ID	P25092
Description	PE-conjugated Anti-GUCY2C(indusatumab biosimilar) mAb
Delivery	In Stock
Storage&Shipping	Store at 2°C-8°C for 6 months
Sterility	Products are supplied non-sterile. For cell culture applications, dilute in appropriate medium and sterile-filter (0.22 μm) prior to use.
Background	Research grade biosimilar. Not for use in therapeutic or diagnostic procedures for humans or animals.
Usage	Research use only



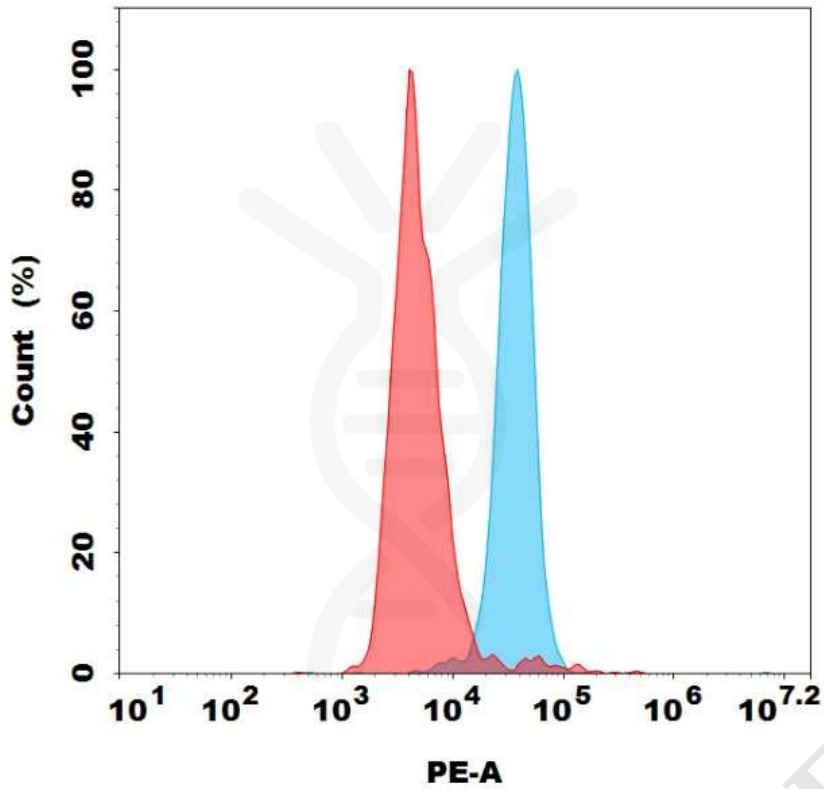


Figure 1. Flow cytometry analysis with 1 μ l/test PE-conjugated Anti-GUCY2C(indusatumab biosimilar) mAb on HT55 cells (Blue histogram) or CHO-S cells (Red histogram).

