

PRODUCT INFORMATION

Clone ID	DMC488
Target	LIV-1
Synonyms	LIV1, SLC39A6, ZIP-6
Host Species	Rabbit
Description	PE-conjugated Anti-LIV-1 antibody(DMC488); IgG1 Chimeric mAb
Delivery	In Stock
Uniprot ID	Q13433
IgG type	Rabbit/Human Fc chimeric IgG1
Clonality	Monoclonal
Reactivity	Human
Applications	Flow Cyt
Recommended Dilutions	Flow Cyt 1:330
Purification	Purified from cell culture supernatant by affinity chromatography
Endotoxin	Less than 1.0 EU/μg by the LAL method. For <1 EU/mg requirements, please contact us for customization.
Formulation & Reconstitution	Liquid,PBS with 0.1% Proclin300, 0.18% BSA
Storage&Shipping	Store at 2°C-8°C for 6 months
Sterility	Products are supplied non-sterile. For cell culture applications, dilute in appropriate medium and sterile-filter (0.22 μm) prior to use. Zinc is an essential cofactor for hundreds of enzymes. It is involved in protein, nucleic acid, carbohydrate, and lipid metabolism, as well as in the control of gene transcription, growth, development, and differentiation. SLC39A6 belongs to a subfamily of proteins that show structural characteristics of zinc transporters (Taylor and Nicholson, 2003 [PubMed 12659941]).[supplied by OMIM, Mar 2008]
Background	
Usage	Research use only
Conjugate	PE-conjugated
DIMA Disclaimer	All DIMA recombinant antibodies are genuinely generated by DIMA Biotech. They are all under patent application. Any protein sequencing or reverse engineering attempt is prohibited. We are actively scr



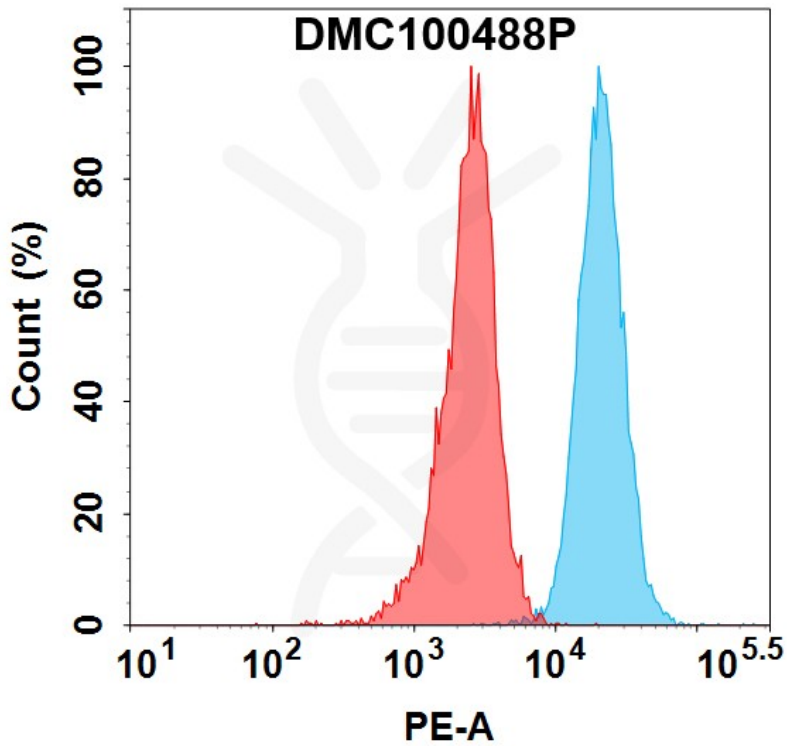


Figure 1. Flow cytometry analysis with 100 μ l/test (1:330) PE-conjugated Anti-LIV-1 antibody(DMC488); IgG1 Chimeric mAb (DMC100488P) (Blue histogram) or isotype control mAb (Red histogram) on Raji cells.

