

PRODUCT INFORMATION

Common Name	ANTI-LY6E□DLYE-5953A□DLYE5953A□RG 7841
Conjugate	PE-conjugated
Synonyms	RIGE; SCA2; RIG-E; SCA-2; TSA-1
Applications	Flow Cyt
Recommended Dilutions	1μl/test
Formulation & Reconstitution	Liquid□PBS with,0.18%BSA□0.1%Proclin300
Host Species	Humanized
IgG type	IgG1
Reactivity	Human
Target	LY6E
Uniprot ID	Q16553
Description	PE-conjugated Anti-LY6E(RG7841 biosimilar) mAb
Delivery	In Stock
Storage & Shipping	Store at 2°C-8°C for 6 months
Background	Research grade biosimilar. Not for use in therapeutic or diagnostic procedures for humans or animals.
Usage	Research use only



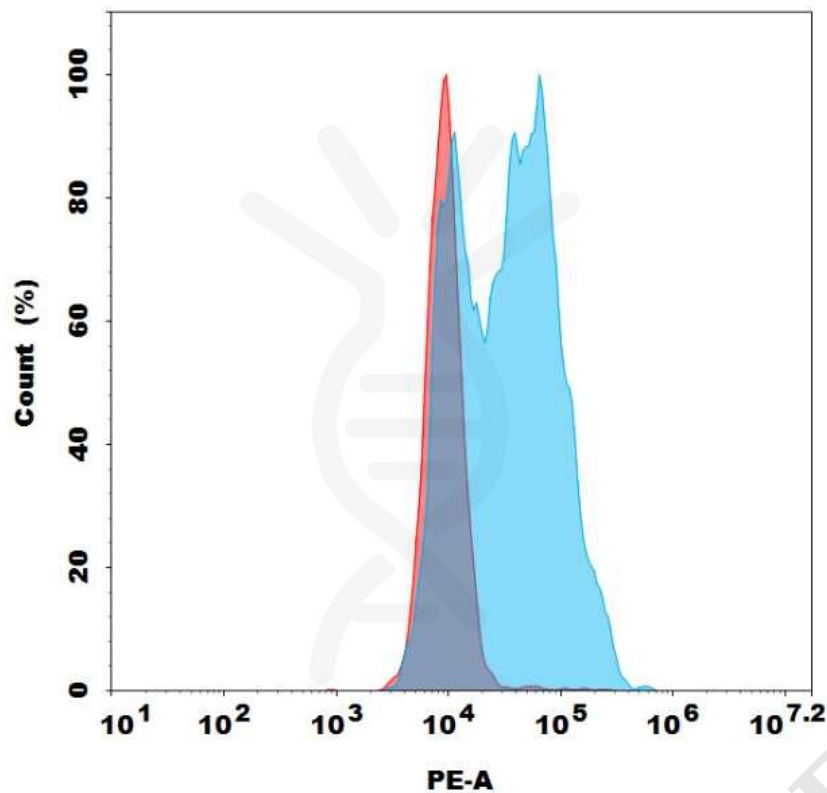


Figure 1. Flow cytometry analysis with 0.1μl/test PE-conjugated Anti-LY6E(RG7841) mAb on Expi293 cells transfected with Human LY6E protein (Blue histogram) or Expi293 transfected with irrelevant protein (Red histogram).

