

**PRODUCT INFORMATION**

<b>Common Name</b>	ANB-030;ANB030;ANB 030;ANB-30;ANB30;ANB30
<b>Conjugate</b>	PE-conjugated
<b>Synonyms</b>	PD1;PD-1;CD279;SLEB2;hPD-1;hPD-I;hSLE1
<b>Applications</b>	Flow Cyt
<b>Recommended Dilutions</b>	1µl/test
<b>Formulation &amp; Reconstitution</b>	Liquid□PBS with,0.18%BSA□0.1%Proclin300
<b>Host Species</b>	N/A
<b>IgG type</b>	IgG1
<b>Reactivity</b>	Human
<b>Target</b>	PD-1
<b>Uniprot ID</b>	Q15116
<b>Description</b>	PE-conjugated Anti-PD-1(rosnilimab biosimilar) mAb
<b>Delivery</b>	In Stock
<b>Storage &amp; Shipping</b>	Store at 2°C-8°C for 6 months
<b>Background</b>	Research grade biosimilar. Not for use in therapeutic or diagnostic procedures for humans or animals.
<b>Usage</b>	Research use only
<b>DIMA Disclaimer</b>	All DIMA recombinant antibodies are genuinely generated by DIMA Biotech. They are all under patent application. Any protein sequencing or reverse engineering attempt is prohibited. We are actively scrutinizing all patent application to ensure no IP infringement.



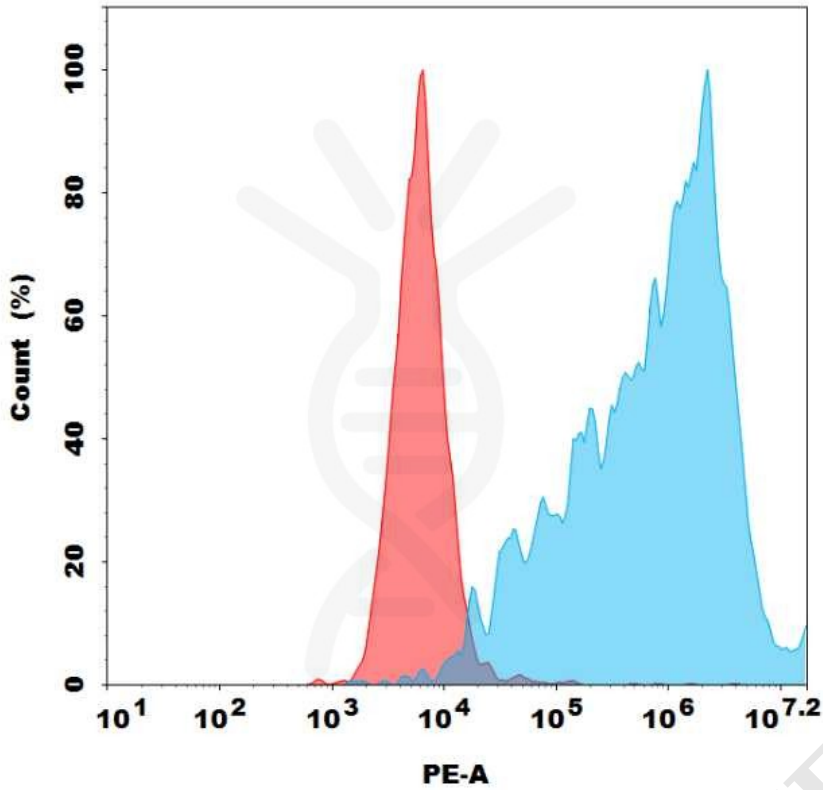


Figure 1. Flow cytometry analysis with 1  $\mu$ l/test PE-conjugated Anti-PD-1(rosnilimab biosimilar) mAb on HEK293 cells transfected with Human PD-1 protein (Blue histogram) or HEK293 transfected with irrelevant protein (Red histogram).

