

PRODUCT INFORMATION

Common Name	MEDI4736
Conjugate	PE-conjugated
Synonyms	PD-L1;CD274;B7-H1;PDCD1L1;PDCD1LG1
Applications	Flow Cyt
Endotoxin	Less than 1.0 EU/ μ g by the LAL method. For <1 EU/mg requirements, please contact us for customization.
Recommended Dilutions	Flow Cyt 1 μ l/test
Formulation & Reconstitution	Liquid,PBS with,0.18%BSA□0.1%Proclin300
Host Species	Humanized
IgG type	Human IgG1(K214R,L234F,L235E,P331S) - Kappa
Reactivity	Human
Target	PDL1
Uniprot ID	Q9NZQ7
Description	PE-conjugated Anti-PDL1 (durvalumab biosimilar) mAb
Delivery	In Stock
Storage&Shipping	Store at 2°C-8°C for 6 months
Sterility	Products are supplied non-sterile. For cell culture applications, dilute in appropriate medium and sterile-filter (0.22 μ m) prior to use.
Background	Research grade biosimilar. Not for use in therapeutic or diagnostic procedures for humans or animals.
Usage	Research use only



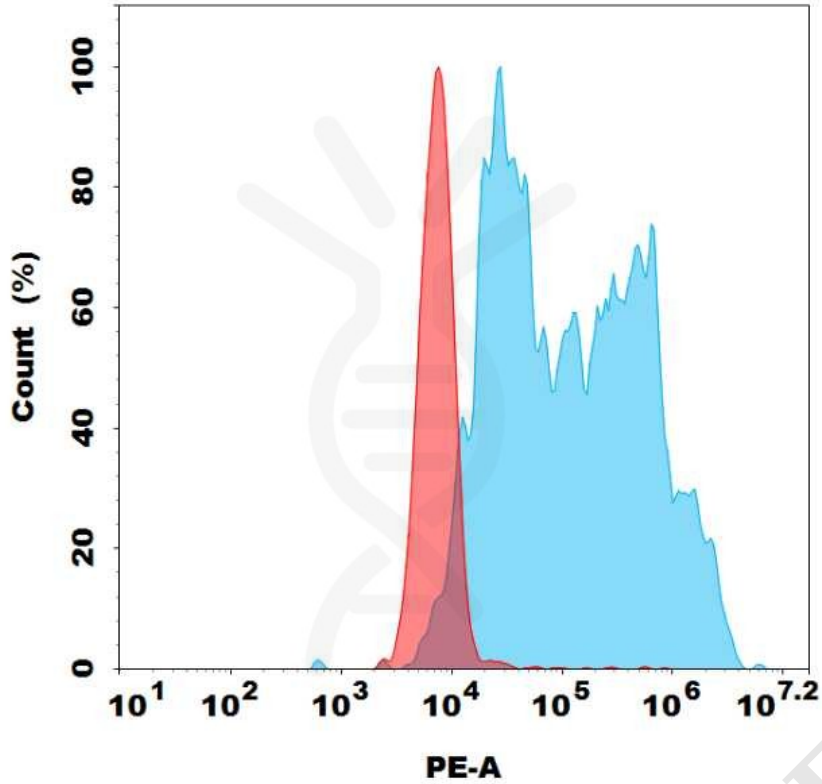


Figure 1. Flow cytometry analysis with 1 μ l/test PE-conjugated Anti-PD-L1(durvalumab biosimilar) mAb on HEK293 cells transfected with Human PD-L1 protein (Blue histogram) or HEK293 transfected with irrelevant protein (Red histogram).

