

PRODUCT INFORMATION

Target	Trop2
Synonyms	EGP1; GP50; M1S1; EGP-1; TACSTD2; GA7331; GA733-1
Description	Recombinant Rhesus macaque Trop2 protein with C-terminal 10×His tag
Delivery	In Stock
Uniprot ID	XP_001114599.1
Expression Host	HEK293
Tag	C-10×His tag
Molecular Characterization	Trop2(Gln31-Thr274) 10×His tag
Molecular Weight	The protein has a predicted molecular mass of 28.9 kDa after removal of the signal peptide. The apparent molecular mass of cTrop2-His is approximately 35-55 kDa due to glycosylation.
Purity	The purity of the protein is greater than 85% as determined by SDS-PAGE and Coomassie blue staining.
Formulation & Reconstitution	Lyophilized from sterile PBS, pH 7.4. Normally 5 % - 8% trehalose is added as protectants before lyophilization. Please see Certificate of Analysis for specific instructions of reconstitution.
Storage&Shipping	Store at -20°C to -80°C for 12 months in lyophilized form. After reconstitution, if not intended for use within a month, aliquot and store at -80°C (Avoid repeated freezing and thawing). Lyophilized proteins are shipped at ambient temperature.
Sterility	Products are supplied non-sterile. For cell culture applications, dilute in appropriate medium and sterile-filter (0.22 µm) prior to use.
Background	This intronless gene encodes a carcinoma-associated antigen. This antigen is a cell surface receptor that transduces calcium signals. Mutations of this gene have been associated with gelatinous drop-like corneal dystrophy.[provided by RefSeq, Dec 2009]
Usage	Research use only
Conjugate	Unconjugated



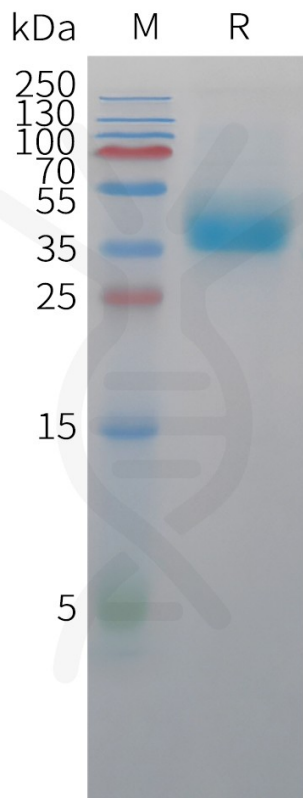


Figure 1. Rhesus macaque Trop2 Protein, His Tag on SDS-PAGE under reducing condition.

DIMABIO CONFIDENTIAL

