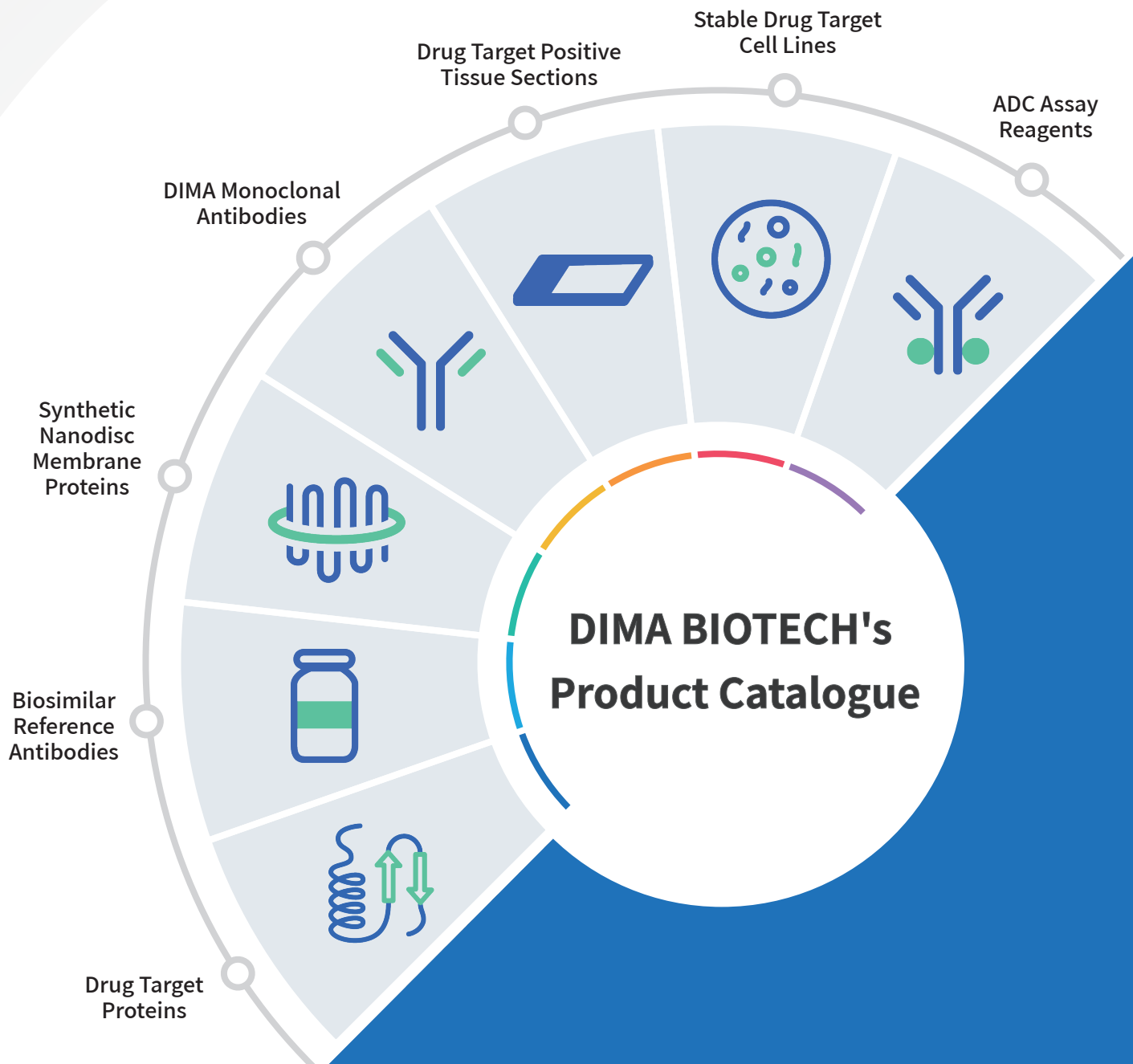




**DIMA BIOTECH**  
Recombinant mAbs and proteins

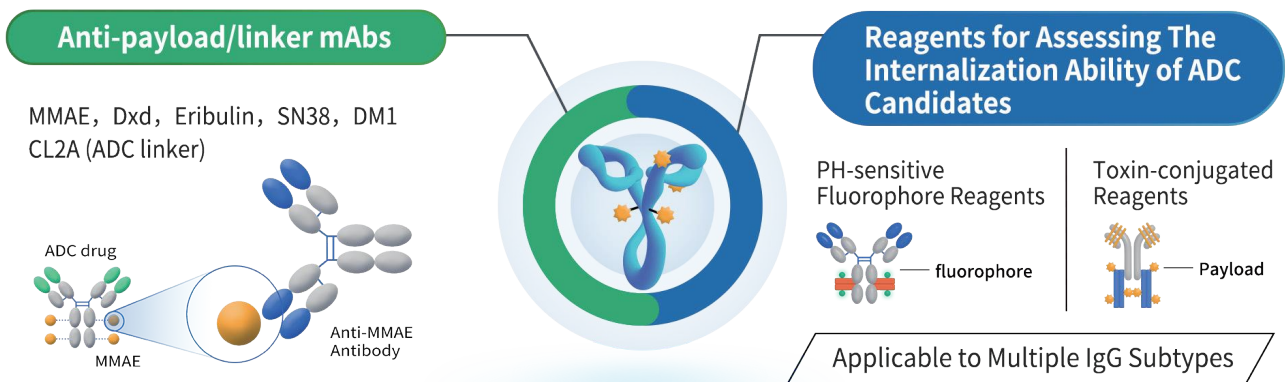
# DIMA BIOTECH's Product Catalogue



# Contents

01	ADC Assay Reagents	02
02	Nanodisc Membrane Proteins	05
03	Drug Target Proteins	07
04	DIMA Monoclonal Antibodies	09
05	Biosimilar Reference Antibodies	11
06	Stable Drug Target Cell Lines	12
07	Drug Target Positive Tissue Sections	14

# ADC Assay Reagents



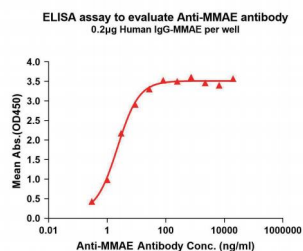
## Anti-payload/linker mAbs

### ■ DIMA product's features

- 1** ▶ High Specificity: Validated by ELISA-based activity assays, specifically binds to the target small molecule.
- 2** ▶ Customizable Formats: Available in various formats, including unlabeled (naked) antibodies and biotin-labeled versions.
- 3** ▶ Rapid Custom Development: Powered by DIMA's innovative monoclonal antibody platform, enabling fast development and production of novel anti-payload antibodies.
- 4** ▶ Multiple Application Scenarios: PK and DAR analysis of ADC, assessment of ADC therapeutic efficacy and Binding affinity measurement.

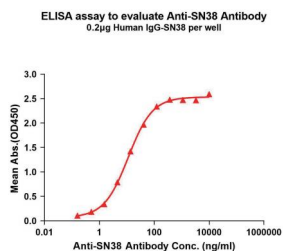
## Part of validation data

### MMAE



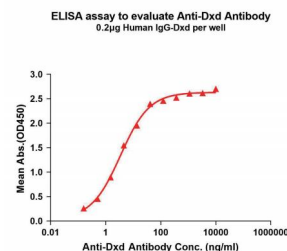
EC50 of anti-MMAE mAb binding to IgG-MMAE: 2.274 ng/mL.

### SN38



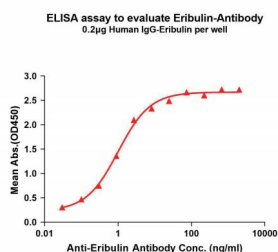
EC50 of anti-SN38 mAb binding to IgG-SN38: 11.39 ng/mL.

### Dxd



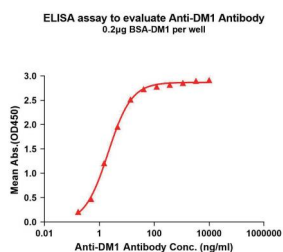
EC50 of anti-Dxd mAb binding to IgG-Dxd: 3.447 ng/mL.

### Eribulin



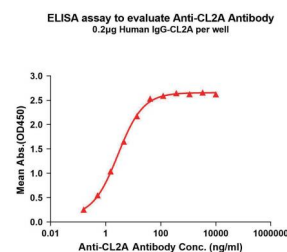
EC50 of anti-Eribulin mAb binding to IgG-Eribulin: 1.012 ng/mL.

### DM1



EC50 of anti-DM1 mAb binding to BSA-DM1: 2.110 ng/mL.

### CL2A (ADC linker)



EC50 of anti-CL2A mAb binding to IgG-CL2A: 2.801 ng/mL.

## Featured products

	Target	Cat. No.	Product name	applications
Anti-payload mAbs	DM1	DME101062	Anti-DM1 antibody(14E3); Rabbit mAb	ELISA
	Dxd	DME101024	Anti-Dxd antibody(1A1); Rabbit mAb	ELISA
		DME101025	Anti-Dxd antibody(1A5); Rabbit mAb	ELISA
		DME101026	Anti-Dxd antibody(1A12); Rabbit mAb	ELISA
		DME101027	Anti-Dxd antibody(1E6); Rabbit mAb	ELISA
		DME101025B	Biotinylated Anti-Dxd antibody(1A5); Rabbit mAb	ELISA
	Eribulin	DME101047	Anti-Eribulin antibody(2E4); Rabbit mAb	ELISA
		DME101048	Anti-Eribulin antibody(3E2); Rabbit mAb	ELISA
		DME101049	Anti-Eribulin antibody(3G1); Rabbit mAb	ELISA
		DME101050	Anti-Eribulin antibody(3G5); Rabbit mAb	ELISA
	MMAE	DME101003	Anti-MMAE antibody(8B4); Rabbit mAb	ELISA
		DME101004	Anti-MMAE antibody(8C4); Rabbit mAb	ELISA
		DME101005	Anti-MMAE antibody(9C4); Rabbit mAb	ELISA
		DME101006	Anti-MMAE antibody(11B2); Rabbit mAb	ELISA
		DME101007	Anti-MMAE antibody(11C8); Rabbit mAb	ELISA
DME101006B		Biotinylated Anti-MMAE antibody(11B2); Rabbit mAb	ELISA	
DME101007B		Biotinylated Anti-MMAE antibody(11C8); Rabbit mAb	ELISA	
SN38	DME101020	Anti-SN38 antibody(1G1); Rabbit mAb	ELISA	
Anti-linker mAbs	CL2A	DME101021	Anti-CL2A(ADC linker) antibody(1H6); Rabbit mAb	ELISA
		DME101022	Anti-CL2A(ADC linker) antibody(1G9); Rabbit mAb	ELISA
		DME101023	Anti-CL2A(ADC linker) antibody(1H2); Rabbit mAb	ELISA
	G4S linker	DME101144	Anti-(G4S)4 antibody(BM1049), Rabbit mAb	ELISA; FC
		DME101144B	Biotinylated Anti-(G4S)4 antibody(BM1049), Rabbit mAb	ELISA; FC
		DME101144P	PE-conjugated Anti-(G4S)4 antibody(BM1049), Rabbit mAb	FC
		DME101063	Anti-(G4S)4 antibody(12H7), Rabbit mAb	ELISA

# Antibody Internalization Assay Reagents

## DIMA product's features

1

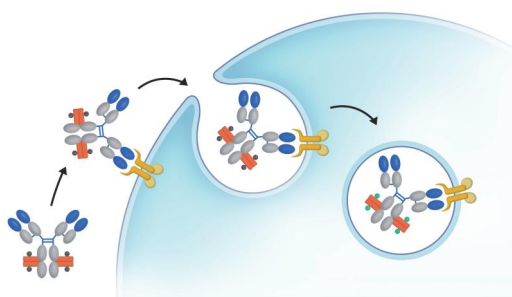
High sensitivity and stability, cost-effectiveness and easy to perform without complex instruments or reagents.

2

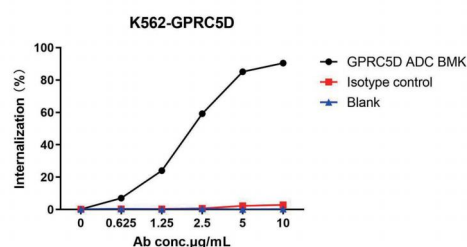
Broad IgG subtype compatibility, such as Human IgG1, IgG2 and IgG4, Rabbit IgG, and Mouse IgG2a and IgG2b.

## Part of validation data

### pH-Sensitive IgG Labeling Reagents (AME100001)

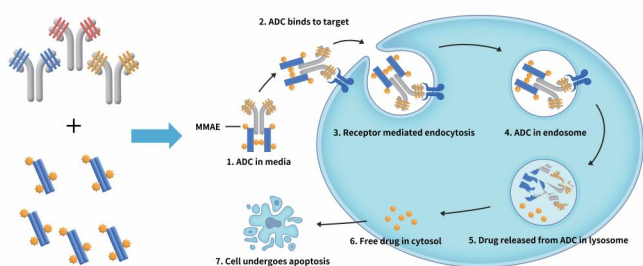


the mechanism of AME100001

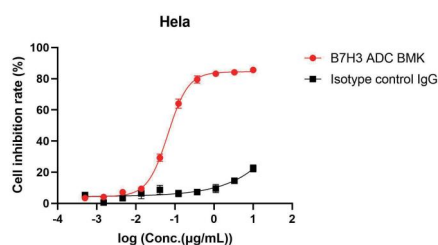


The fluorescent signal is anti-GPRC5D ADC BMK antibody dependent.

### Payload Conjugated IgG Labeling Reagents (AME100002)



The mechanism of AME100002



Cell inhibition detected by CCK8 method. B7H3 ADC is labeled with DiTag™ MMAE IgG labeling reagent (Cat. No. AME100003)

## Featured products

Catalog No.	Product Description
AME100001	DiTag™ pH sensitive IgG labeling reagent
AME100002	DiTag™ pH sensitive IgG labeling reagent plus
AME100003	DiTag™ MMAE IgG labeling reagent

# Synthetic Nanodisc Membrane Proteins

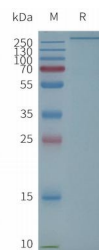
## -----Multipass Transmembrane Proteins, Right off the Shelf.

### ■ DIMA product's features

- 1 **Largest in-stock selection:** 500+ full-length multi-transmembrane proteins, including GPCRs and ion channels, leading globally.
- 2 **Maximum transmembrane count:** Successfully produced 24-transmembrane full-length proteins, pushing industry limits.
- 3 **Comprehensive validation:** High purity, solubility, and stability, maintaining native conformation and supporting room-temperature shipping.
- 4 **Flexible customization:** Personalized protein expression services to meet diverse research needs.

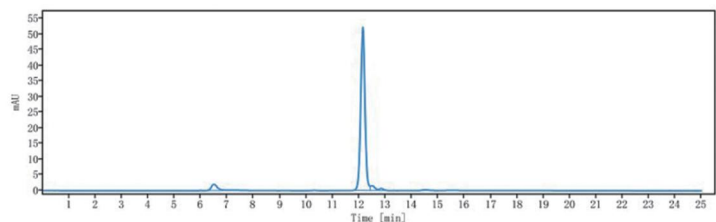
### ■ Part of validation data

#### SDS-PAGE



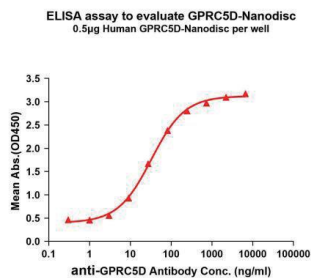
Human SCN5A-Nanodisc, Flag Tag on SDS-PAGE.  
24-pass Na<sup>+</sup> ion channel, cat. No.FLP100726

#### SEC-HPLC



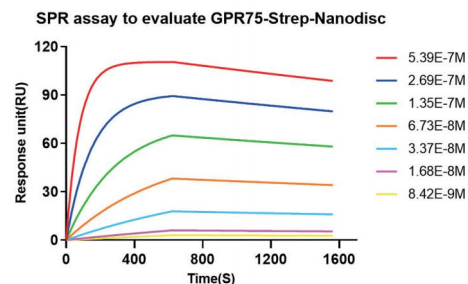
The purity of Human SLC7A11 full length protein-synthetic nanodisc is greater than 90% as determined by SEC-HPLC.  
12-pass Cystine/glutamate transporter, Cat. No. FLP100048

#### ELISA



ELISA analysis using anti-GPRC5D monoclonal antibody (Cat. No. DME100090) and purified human GPRC5D full length protein-synthetic nanodisc,  
7-pass GPCR, Cat. No. FLP100011

#### SPR



Human GPR75-Nanodisc can bind Anti-GPR75 antibody (DMC100368) with an affinity constant of 5.02 nM as determined in a SPR assay.  
7-pass GPCR, cat. No.FLP120031

## ■ Featured products

Target	Cat. No.	Product name
5HT1A	FLP120161	Human 5HT1A-Strep full length protein-synthetic nanodisc
5HT1B	FLP120162	Human 5HT1B-Strep full length protein-synthetic nanodisc
5HT2A	FLP120166	Human 5HT2A-Strep full length protein-synthetic nanodisc
5HT2C	FLP120168	Human 5HT2C-Strep full length protein-synthetic nanodisc
5HT7R	FLP100172	Human 5HT7R full length protein-synthetic nanodisc
ADORA1	FLP120173	Human ADORA1-Strep full length protein-synthetic nanodisc
ADORA2A	FLP100020	Human ADORA2A full length protein-synthetic nanodisc
ADORA2B	FLP100093	Human ADORA2B full length protein-synthetic nanodisc
ADRA2A	FLP100186	Human ADRA2A full length protein-synthetic nanodisc
ADRA2B	FLP120187	Human ADRA2B-Strep full length protein-synthetic nanodisc
ADRB1	FLP100157	Human ADRB1 full length protein-synthetic nanodisc
ADRB2	FLP120189	Human ADRB2-Strep full length protein-synthetic nanodisc
ADRB3	FLP120190	Human ADRB3-Strep full length protein-synthetic nanodisc
AGTR1	FLP110098	Human MBP-AGTR1 full length protein-synthetic nanodisc
APLNR	FLP100132	Human APLNR full length protein-synthetic nanodisc
BDKRB2	FLP100123	Human BDKRB2 full length protein-synthetic nanodisc
C3AR1	FLP120215	Human C3AR1-Strep full length protein-synthetic nanodisc
C5AR1	FLP100086	Human C5AR1 full length protein-synthetic nanodisc
CALCR	FLP100216	Human CALCR full length protein-synthetic nanodisc
CB1	FLP100023	Human CB1 full length protein-synthetic nanodisc
CB2	FLP100138	Human CB2 full length protein-synthetic nanodisc
CCR1	FLP100094	Human CCR1 full length protein-synthetic nanodisc
CCR10	FLP100219	Human CCR10 full length protein-synthetic nanodisc
CCR3	FLP100075	Human CCR3 full length protein-synthetic nanodisc
CCR4	FLP100024	Human CCR4 full length protein-synthetic nanodisc
CCR5	FLP100100	Human CCR5 full length protein-synthetic nanodisc
CCR6	FLP100059	Human CCR6 full length protein-synthetic nanodisc
CCR7	FLP100060	Human CCR7 full length protein-synthetic nanodisc
CCR8	FLP100037	Human CCR8 full length protein-synthetic nanodisc
CCR8	FLP120037	Human CCR8-Strep full length protein-synthetic nanodisc
CCR9	FLP100061	Human CCR9 full length protein-synthetic nanodisc
CGRPR	FLP100145	Human CGRPR-RAMP1 full length protein-synthetic nanodisc
CRHR1	FLP120228	Human CRHR1-Strep full length protein-synthetic nanodisc
CX3CR1	FLP100115	Human CX3CR1 full length protein-synthetic nanodisc
CXCR1	FLP100091	Human CXCR1 full length protein-synthetic nanodisc
CXCR2	FLP100066	Human CXCR2 full length protein-synthetic nanodisc
CXCR3	FLP100053	Human CXCR3 full length protein-synthetic nanodisc
CXCR4	FLP100074	Human CXCR4 full length protein-synthetic nanodisc
CXCR5	FLP100067	Human CXCR5 full length protein-synthetic nanodisc
CXCR6	FLP100124	Human CXCR6 full length protein-synthetic nanodisc
DRD1	FLP120229	Human DRD1-Strep full length protein-synthetic nanodisc
DRD2	FLP100230	Human DRD2 full length protein-synthetic nanodisc
DRD4	FLP120232	Human DRD4-Strep full length protein-synthetic nanodisc
DRD5	FLP120233	Human DRD5-Strep full length protein-synthetic nanodisc
F2RL1	FLP100036	Human F2RL1 full length protein-synthetic nanodisc
F2RL2	FLP100442	Human F2RL2 full length protein-synthetic nanodisc
F2RL3	FLP100114	Human F2RL3 full length protein-synthetic nanodisc
FPR1	FLP120239	Human FPR1-Strep full length protein-synthetic nanodisc
FPR2	FLP120240	Human FPR2-Strep full length protein-synthetic nanodisc
FSHR	FLP100047	Human FSHR full length protein-synthetic nanodisc

Except for Synthetic Nanodisc Membrane Proteins, DIMA BIOTECH also provides other full-length multipass transmembrane proteins produced by various technologies, including Nanoparticles (MNPs), exosome (EXO), Virus-like particles (VLPs), PeptiNanodisc and MSP Nanodisc. More information, please visit <https://www.dimabio.com/full-length-transmembrane-proteins-mnp-vlp-exo-detergent-nanodisc>

# Drug Target Proteins

## ■ DIMA product's features

1

▶ **Wide Coverage:** 1,000+ on-shelf products covering 900+ drug targets.

2

▶ **Various Species:** Different species including human, mouse, monkey and dog *et al.*

3

▶ **Function Validation:** The purified proteins can bind to its specific antibodies or ligands.

4

▶ **Multiple Tags (such as His, hFc, mFc, GST, S tag) and Biotin-labeled:** To meet different downstream applications.

5

▶ **Multiple Applications:** Used in Antibody drug development as immune antigens, CAR positivity testing, antibody screening and functional testing, and functional analysis including antibody affinity.

## ■ Part of validation data

### Protein Purity

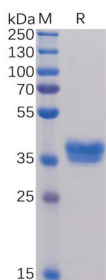


Figure 1. Human BCMA, mFc Tag on SDS-PAGE under reducing condition.

### Receptor-ligand interaction

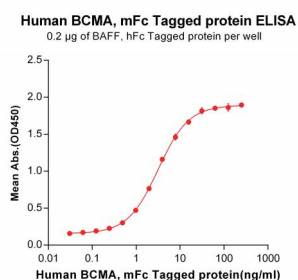


Figure 2. Human BAFF protein (PME100043) can bind Human BCMA protein (PME100035) in a linear range of 0.03-15.625 ng/ml.

### Biosimilar interaction

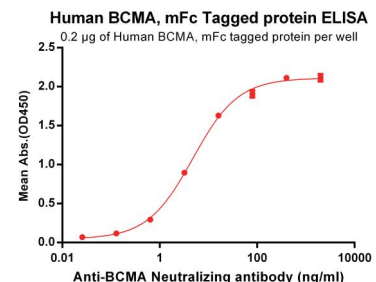


Figure 3. Human BCMA protein (PME100035) can bind Anti-BCMA Neutralizing antibody (BME100028) in a linear range of 0.64-80.0 ng/ml.

## ■ Featured products

Target	Cat. No.	Product name
2B4	PME100010	Human 2B4 Protein, mFc-His Tag
	PME100477	Human 2B4 Protein, hFc tag
4-1BB	PME100011	Human 4-1BB Protein, mFc-His Tag
5T4	PME100123	Human 5T4 Protein, His Tag
ACE2	PME100072	Human ACE2 Protein, mFc Tag
	PME100073	Human ACE2 Protein, hFc Tag
	PME100490	Human ACE2 Protein, His Tag
ACVR2B	PME101551	Human ACVR2B Protein, hFc Tag
	PME101610	Human ACVR2B Protein, mFc Tag
ADAM9	PME100901	Human ADAM9 Protein, His Tag
ADGRE2	PME100741	Human ADGRE2 Protein, His Tag
AFP	PME100075	Human AFP Protein, hFc Tag
ALB	PME100591	Human ALB Protein, His Tag
ALPP	PME101242	Human ALPP Protein, His Tag
AMHR2	PME100549	Human AMHR2 Protein, hFc Tag
ANGPTL3	PME100527	Human ANGPTL3 Protein, His Tag
APLN	PME101355	Human APLN Protein, hFc Tag
AXL	PME100070	Human AXL Protein, His Tag
	PME100532	Human AXL Protein, hFc Tag
B7-1	PME100473	Human B7-1 Protein, hFc Tag
	PME100047	Human B7-1 Protein, mFc-His Tag
B7-2	PME100474	Human B7-2 Protein, hFc Tag
B7-H2	PME100029	Human B7-H2 Protein, mFc-His Tag
B7-H3	PME100012	Human B7-H3 Protein, mFc-His Tag
	PME-M100008	Mouse B7-H3 Protein, hFc Tag
	PME101831	Human B7-H3(29-245) Protein, hFc Tag
	PME101834	Human B7-H3(27-461) Protein, hFc Tag
B7-H4	PME100053	Human B7-H4 Protein, hFc Tag
B7-H5	PME101041	Human B7-H5 Protein, hFc Tag
B7-H6	PME100510	Human B7-H6 Protein, His Tag
BAFF	PME100043	Human BAFF Protein, hFc Tag
BAFF-R	PME100044	Human BAFF-R Protein, mFc Tag
	PME100503	Human BAFF-R Protein, hFc Tag
BCMA	PME100001	Human BCMA Protein, hFc-His Tag
	PME100035	Human BCMA Protein, mFc Tag
	PME100511	Human BCMA Protein, His Tag
	PME-M100001	Mouse BCMA Protein, hFc Tag
	PME101677B	Biotinylated Human BCMA Protein, hFc Avi Tag
BTLA	PME100048	Human BTLA Protein, mFc-His Tag
	PME100524	Human BTLA Protein, His Tag
BTN3A1	PME100056	Human BTN3A1 Protein, mFc-His Tag
C1S	PME101394	Human C1S Protein, His Tag
C2	PME101342	Human C2 Protein, His Tag
C5	PME101347	Human C5 Protein, His Tag
C5AR1	PME100830	Human C5AR1 Protein, hFc Tag
	PME-C100092	Cynomolgus C5AR1 Protein, hFc Tag
CA9	PME100152	Human CA9 Protein, His Tag
CADM1	PME101544	Human CADM1 Protein, hFc Tag
	PME101545	Human CADM1 Protein, mFc Tag
CB1	PME100507	Human CB1 (1-116) Protein, hFc Tag
	PME100508	Human CB1 Protein, hFc Tag
CCL2	PME100919	Human CCL2 Protein, hFc Tag
CCR4	PME100824	Human CCR4 (1-39) Protein, hFc Tag
	PME100112	Human CCR4 Protein, hFc Tag
	PME101112	Human CCR4(1-39) Protein, mFc Tag
CCR8	PME101103	Human CCR8 Protein, mFc Tag
	PME101091	Human CCR8 Protein, hFc Tag
	PME-M100034	Mouse CCR8 Protein, hFc Tag
CD112	PME100575	Human CD112 Protein, mFc Tag
	PME100576	Human CD112 Protein, His Tag

The full list of DIMA BIOTECH' s drug target proteins can be found on the website: <https://www.dimabio.com/eccd-proteins>.

# DIMA Monoclonal Antibodies

## ■ DIMA product's features

- 1** Available now, covering multiple popular tumor targets:  
Over 5,000 rabbit monoclonal antibodies have been successfully developed, covering over 400 targets.
- 2** **Wide Application Range:**  
All products are validated by ELISA or FC, and can also be developed for applications such as WB, IHC, IF, and fluorescent labeling.
- 3** **High Specificity and High Affinity:**  
The rabbit antibody gene library offers greater diversity, higher affinity, and broader epitope coverage.
- 4** **Various Antibody Types:**  
Rabbit mAbs, human-rabbit chimeric antibodies, humanized antibodies, and more.
- 5** **High Drugability:**  
Antibodies developed using DIMA BIOTECH' s rabbit mAb discovery platform based on single B cell technology have high drugability.
- 6** **High Cost-Effectiveness:**  
Customized large-format packaging is available.

## ■ Part of validation data

### Anti-GPRC5D antibody(DM61),Rabbit mAb

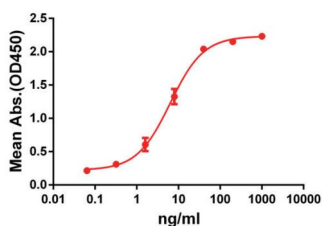


Figure 1. ELISA plate pre-coated by 2 µg/ml (100 µl/well) Human GPRC5D protein, hFc-His tagged protein (PME100066) can bind Rabbit anti-GPRC5D monoclonal antibody (clone: DM61) in a linear range of 1-100 ng/ml.

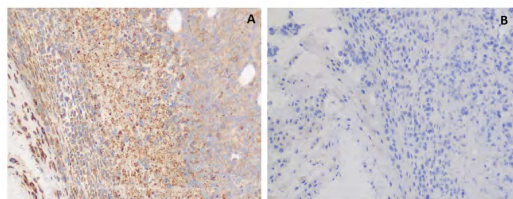


Figure 2. IHC staining of H929 cells A. with rabbit anti-GPRC5D mAb (Cat# DME100061) at 5.9 µg/ml. B. with another anti-GPRC5D mAb (Cat# DME100090) at 8.8 µg/ml. DME100061 can specifically react with GPRC5D in IHC application.

### Anti-CCR8 antibody,Rabbit mAb

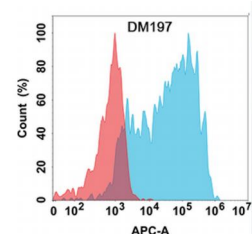
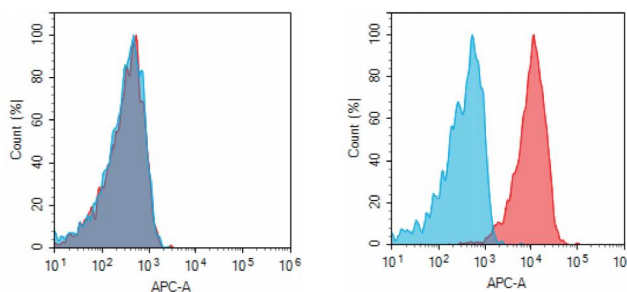


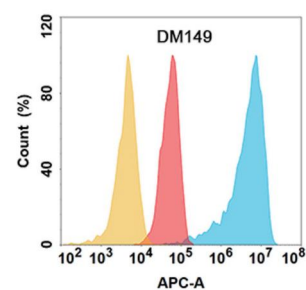
Figure 3. Flow cytometry analysis with Anti-CCR8 (DM197) on Expi293 cells transfected with human CCR8 (Blue histogram) or Expi293 transfected with irrelevant protein (Red histogram).

### Anti-GPRC5D antibody, Rabbit mAb



**Figure 4.** Flow cytometry analysis of antigen binding of rabbit anti-human GPRC5D mAb (DME100091). (A) DME100091 does not bind to Jurkat cells that do not express GPRC5D. (B) A clear peak shift of DME100091 was seen compared to the control when incubated with GPRC5D-expressing MM.1S cells, indicating strong binding of DME100091 to GPRC5D. Antibodies were incubated at 5 µg/mL.

### Anti-ROR1 antibody, Rabbit mAb



**Figure 5.** ROR1 protein is highly expressed on the surface of Expi293 cell membrane. Flow cytometry analysis with Anti-ROR1 (DM149) on Expi293 cells transfected with human ROR1 (Blue histogram) or Expi293 transfected with irrelevant protein (Red histogram), and Isotype antibody on Expi293 transfected with irrelevant protein (Orange histogram).

## ■ Featured products

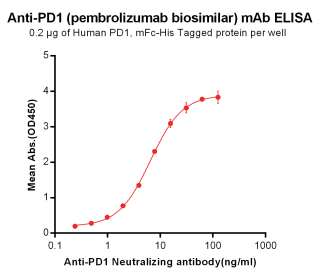
Target	Cat. No.	Product name	Application
GPRC5D	DME100091B	Biotinylated Anti-GPRC5D antibody(DM91); Rabbit mAb	FC; ELISA
CB1	DME100144	Anti-CB1 antibody(DM144); Rabbit mAb	ELISA; FC
CCR8	DME100180	Anti-CCR8 antibody(DM180); Rabbit mAb	ELISA; FC
CCR8	DME100195	Anti-CCR8 antibody(DM195); Rabbit mAb	ELISA; FC
CCR8	DME100196	Anti-CCR8 antibody(DM196); Rabbit mAb	ELISA; FC
CCR8	DME100197	Anti-CCR8 antibody(DM197); Rabbit mAb	ELISA; FC
CXCR3	DME100208	Anti-CXCR3 antibody(DM208); Rabbit mAb	ELISA; FC
GPRC5D	DME100091P	PE-conjugated Anti-GPRC5D antibody(DM91); Rabbit mAb	FC; ELISA
CCR4	DMC100297	Anti-CCR4 antibody(DMC297); IgG1 Chimeric mAb	FC; ELISA
GPR75	DMC100368	Anti-GPR75 antibody(DMC368); IgG1 Chimeric mAb	FC; ELISA
ADGRE2	DMC100370	Anti-ADGRE2 antibody(DMC370); IgG1 Chimeric mAb	FC; ELISA
SSTR2	DMC100428	Anti-SSTR2 antibody(DMC428); IgG1 Chimeric mAb	FC; ELISA
CXCR7	DMC100443	Anti-CXCR7 antibody(DMC443); IgG1 Chimeric mAb	FC; ELISA
CCR1	DMC100465	Anti-CCR1 antibody(DMC465); IgG1 Chimeric mAb	FC; WB; ELISA
CXCR1	DMC100470	Anti-CXCR1 antibody(DMC470); IgG1 Chimeric mAb	FC; ELISA
CCR6	DMC100477	Anti-CCR6 antibody(DMC477); IgG1 Chimeric mAb	FC; ELISA
GPR87	DMC100478	Anti-GPR87 antibody(DMC478); IgG1 Chimeric mAb	FC; ELISA
C5AR2	DMC100482	Anti-GPR77 antibody(DMC482); IgG1 Chimeric mAb	FC; ELISA
FZD10	DMC100487	Anti-FZD10 antibody(DMC487); IgG1 Chimeric mAb	FC; ELISA
GPR75	DMC100492	Anti-GPR75 antibody(DMC492); IgG1 Chimeric mAb	FC; ELISA
GIPR	DMC101001	Anti-GIPR antibody(3G5); IgG1 Chimeric mAb	FC; ELISA
CCR5	DMC101003	Anti-CCR5 antibody(4F6); IgG1 Chimeric mAb	FC; ELISA
FZD4	DMC101111	Anti-FZD4 antibody(10E10); IgG1 Chimeric mAb	FC; ELISA
GPR75	DMC100368B	Biotinylated Anti-GPR75 antibody(DMC368); IgG1 Chimeric mAb	FC; ELISA
GPR87	DMC100478B	Biotinylated Anti-GPR87 antibody(DMC478); IgG1 Chimeric mAb	FC; ELISA
GPR75	DMC100492B	Biotinylated Anti-GPR75 antibody(DMC492); IgG1 Chimeric mAb	FC; ELISA
TSHR	DMC101228	Anti-TSHR antibody(1C8); IgG1 Chimeric mAb	FC; ELISA
GPR75	DME101136	Anti-GPR75 antibody(12B6); Rabbit mAb	FC; ELISA
GPR75	DME101136B	Biotinylated Anti-GPR75 antibody(12B6); Rabbit mAb	FC; ELISA
GPR75	DMC100368P	PE-conjugated Anti-GPR75 antibody(DMC368); IgG1 Chimeric mAb	FC; ELISA
GPR56	DME101183	Anti-GPR56 antibody(2H4); Rabbit mAb	FC; ELISA
LGR4	DME101188	Anti-LGR4 antibody(1D9); Rabbit mAb	FC; ELISA
GRPR	DME101290	Anti-GRPR antibody(3B12); Rabbit mAb	FC; ELISA
GLP1R	DME101291	Anti-GLP1R antibody(1A4); Rabbit mAb	FC; ELISA
GPR20	DME101292	Anti-GPR20 antibody(1E10); Rabbit mAb	FC; ELISA
MC4R	DME101294	Anti-MC4R antibody(2H10); Rabbit mAb	FC; ELISA

# Biosimilar Reference Antibodies

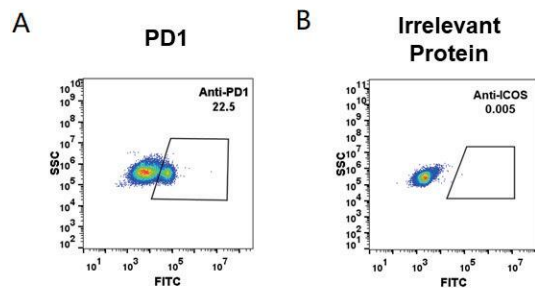
## DIMA product's features

- 1 Wide Coverage of Hot Drug Targets & Popular Biosimilars
- 2 Validated with In-House Recombinant Proteins & Cells
- 3 PE & Biotin Labeling for Versatile Applications

## Part of validation data

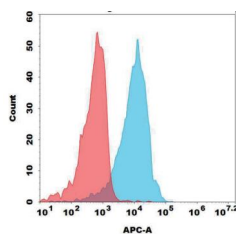


Anti-PD-1 pembrolizumab biosimilar (Cat.No.BME100006) binds pre-coated PD1 ELISA plate (0.24-6.49 ng/ml).



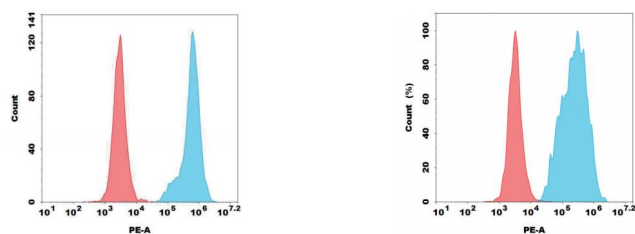
HEK293 cells expressing PD1 (A) or irrelevant protein (B) were stained with Anti-PD-1 pembrolizumab biosimilar (Cat# BME100006) 1µg/ml and Alexa 488-secondary.

### Biotinylated



Biotinylated Anti-STEAP1 Vandortuzumab biosimilar (Cat.No.BME100188B) mAb on SNU-5 cell line (Blue histogram) or 293T (Red histogram).

### PE-conjugated



PE-conjugated Anti-Trop2 sacituzumab biosimilar (Cat.No.BME100023P) on T-47D cell line (Blue histogram) or 293T (Red histogram).

Anti-CLDN18.2 zolbetuximab biosimilar (Cat.No.BME100075P) on AGS-CLDN18.2 stable expression cell line (Blue histogram) or 293T (Red histogram).

## Featured products

Target	sku	Product name
TIGIT	BME100026	Anti-TIGIT (tiragolumab biosimilar) mAb
LILRB4	BME100237	Anti-LILRB4(MK-0482 biosimilar) mAb
GPC3	BME100147	Anti-GPC3(Hu9F2) mAb
TSHR	BME100079	Anti-TSHR (M22) mAb
MAPT	BME100498	Anti-MAPT(etalantug biosimilar) mAb
GPC3	BME100083	Anti-GPC3(codrituzumab biosimilar) mAb
CLDN1	BME100750	Anti-CLDN1(eclutatug biosimilar) mAb

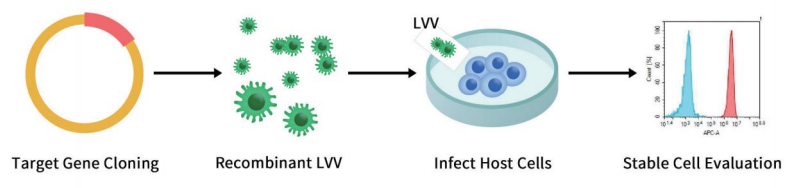
For more in-stock reference antibodies or custom services, please visit the DIMA website at <https://www.dimabio.com/biosimilar-reference-antibodies> or contact [info@dimabio.com](mailto:info@dimabio.com) for more details.

# Gene Overexpression Stable Cell Lines

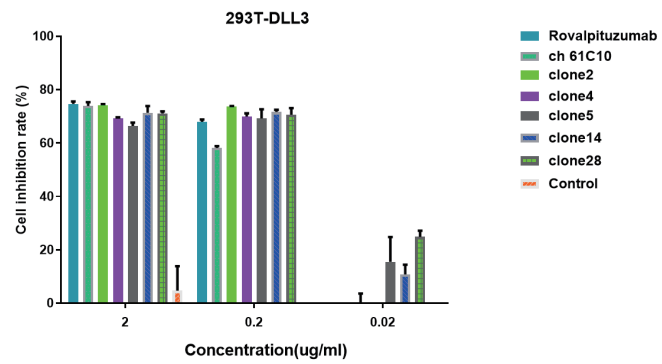
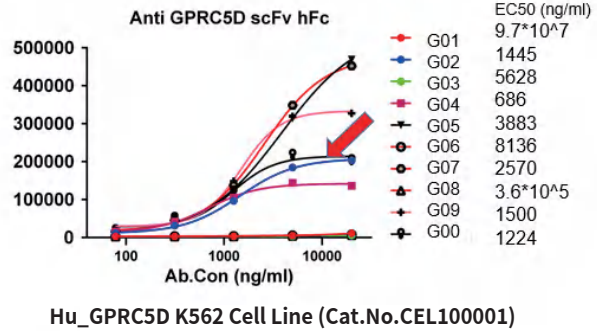
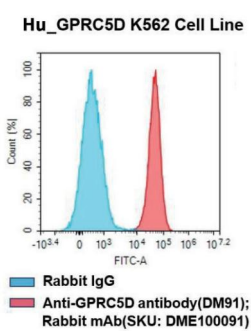
**100+**  
STABLE CELL LINES

**CUSTOMIZED**  
STABLE CELL LINES

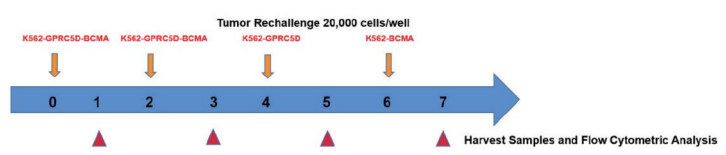
- ✓ Including **K562**  
**293T,CHO,**  
**Jurkat** and more
- ✓ **Proven Applications**  
Antibody Development  
Preclinical Validation



## Part of validation data



Cytotoxicity screening of ADC candidate antibodies using the 293T-DLL3 stable cell line(Cat. No.CEL100039) helps identify antibodies with effective internalization.



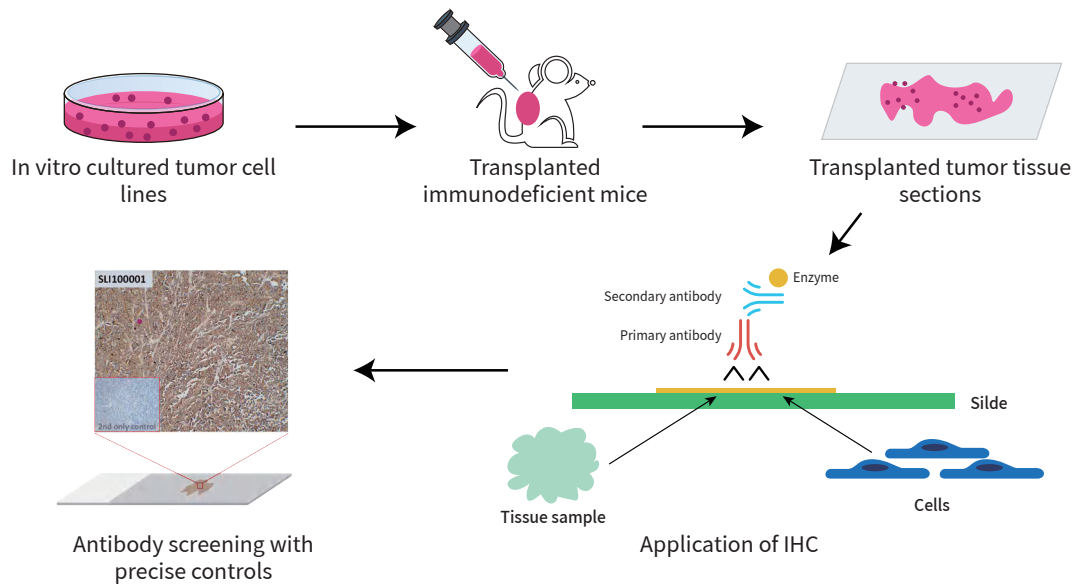
Using K562 stable cell lines expressing GPRC5D/BCMA as surrogate tumor cells, co-cultured with CAR-T cells. In this 7-day assay, CAR-T cells undergo four rounds of tumor challenge to assess the cytotoxicity of T cells against these "target cells," thereby evaluating the specificity of T cell-mediated killing and the potential off-target risks.

## ■ Featured products

Target	Host Cell	sku	Product name
GPRC5D	K562	CEL100001	Hu_GPRC5D K562 Cell Line
PD-L1	K562	CEL100022	Hu_PD-L1 K562 Cell Line
PD-L1	Jurkat	CEL100023	Hu_PD-L1 Jurkat Cell Line
EGFR	K562	CEL100005	Hu_EGFR K562 Cell Line
Trop2	K562	CEL100030	Hu_TROP2 K562 Cell Line
HER3	Jurkat	CEL100032	Hu_HER3 Jurkat Cell Line
CD47	CHO-S	CEL100040	Hu_CD47 CHO-S Cell Line
GPR75	CHO-S	CEL100092	Hu_GPR75 CHO-S Cell Line
B7-H3	K562	CEL100101	Hu_B7-H3 K562 Cell Line
CTLA-4	CHO-S	CEL100105	Hu_CTLA-4 CHO-S Cell Line
EGFR	K562	CEL100005	Hu_EGFR K562 Cell Line
VEGFR2	K562	CEL100074	Hu_VEGFR2 K562 Cell Line
CD63	CHO-S	CEL100082	Hu_CD63 CHO-S Cell Line
TIGIT	K562	CEL100083	Hu_TIGIT K562 Cell Line
GPC3	K562	CEL100084	Hu_GPC3 K562 Cell Line
IL21R	K562	CEL100086	Hu_IL21R K562 Cell Line
VSIG4	Jurkat	CEL100087	Hu_VSIG4 Jurkat Cell Line
CCR2	K562	CEL100088	Hu_CCR2 K562 Cell Line
CDH1	CHO-S	CEL100089	Hu_CDH1 CHO-S Cell Line
CCR5	K562	CEL100090	Hu_CCR5 K562 Cell Line
BTLA	K562	CEL100091	Hu_BTLA K562 Cell Line
CD123	K562	CEL100011	Hu_CD123 K562 Cell Line
CSF1R	K562	CEL100014	Hu_CSF1R K562 Cell Line
CD25	K562	CEL100020	Hu_CD25 K562 Cell Line
ACVR2B	CHO-S	CEL100093	Hu_ACVR2B CHO-S Cell Line
ACVR2A	CHO-S	CEL100094	M_ACVR2A CHO-S Cell Line
ACVR2B	CHO-S	CEL100095	M_ACVR2B CHO-S Cell Line
GPR87	293T	CEL100096	Hu_GPR87 293T Cell Line
ACVR2A	CHO-S	CEL100097	Hu_ACVR2A CHO-S Cell Line
GPR75	CHO-S	CEL100092	Hu_GPR75 CHO-S Cell Line
TSHR	293T	CEL100098	Hu_TSHR 293T Cell Line
FCRL5	K562	CEL100099	Hu_FCRL5 K562 Cell Line
CLDN18.2	K562	CEL100100	Hu_CLDN18.2 K562 Cell Line
B7-H3	K562	CEL100101	Hu_B7-H3 K562 Cell Line
CD19	K562	CEL100102	Hu_CD19 K562 Cell Line
PTPRG	K562	CEL100103	Hu_PTPRG K562 Cell Line

For more in-stock stable cell lines or custom services, please visit the DIMA website at <https://www.dimabio.com/gene-over-expression-stable-cell-lines> or contact [info@dimabio.com](mailto:info@dimabio.com) for more details.

# CDX tissue sections



## ■ DIMA product's features

- 1 **Efficient and reliable xenograft models:** Covering various human tumor cell lines for model diversity and broad application.
- 2 **Precise tissue sections:** High-quality slicing ensures tissue structure integrity and accuracy.
- 3 **Comprehensive IHC controls:** Provide standardized immunohistochemistry control data to optimize antibody screening and validation.

## ■ Featured products

Target	sku	Product name
BCMA BTN3A1 CD138 CD147 CD30 CD33 CD38 CD47 CD63 CD99 CS1 GITR GPC1 GPRC5D ICAM-1 MUC1 PDL-1 SELPLG TFRC TIM3	SLI100001	M-NSG RPMI-8226 DiSliceX™ SlideSet
BTN3A2 CCR1 CD138 CD147 CD164 CD38 CXCR3 GPRC5D KI67 LGALS1 SELPLG	SLI100002	Balb/C nu MM.1S DiSliceX™ SlideSet
AXL CD63 EPCAM LGALS1	SLI100003	Balb/C nu PC3 DiSliceX™ SlideSet
ADAM9 AFP ALB ANGPTL3 B7H3 CD112 CD24 CDH6 CLDN6 CLU CXADR GPC3 HER3 MSLN PRLR SCF	SLI100004	Balb/C nu HuH7 DiSliceX™ SlideSet


For more in-stock tissue sections or custom services, please visit the DIMA website at <https://www.dimabio.com/cdx-tissue-sections-for-ihc-screening> or contact [info@dimabio.com](mailto:info@dimabio.com) for more details.


# DIMA Biotechnology LTD

Dedicate on immuno-oncology,  
Perfect with recombinant mAb development



## DIMA Biotechnology

 +1 (410) 963 4165

 [info@dimabio.com](mailto:info@dimabio.com)

 Maryland / Wuhan

 [www.dimabio.com](http://www.dimabio.com)